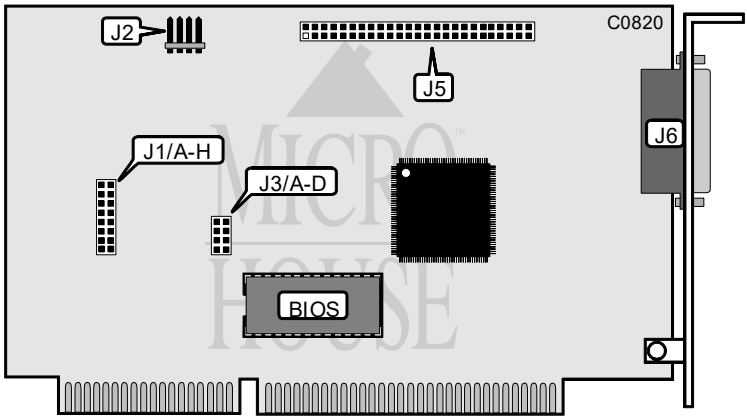


ADAPTEC, INC.
AVA-1515

Q3/95

Data bus: 16-bit ISA
Size: Half-length, full-height card
Hard drive supported: Up to seven SCSI drives
Floppy drives supported: 360KB, 720KB, 1.2MB, or 1.44MB drives



CONNECTIONS	
Function	Location
4-pin connector - drive active LED	J2
50-pin SCSI connector - intrenal	J5
25-pin SCSI connector - external	J6

Continued on next page. . .

ADAPTEC, INC.

AVA-1515

...continued from previous page

USER CONFIGURABLE SETTINGS		
Function	Location	Setting
í Host adapter BIOS enabled	J1/A	closed
Host adapter BIOS disabled	J1/A	open
í AT port address is 340h - 35Fh	J1/D	open
AT port address is 140h - 15Fh	J1/D	closed
í SCSI parity check enabled	J3/A	open
SCSI parity check disabled	J3/A	closed
í SCSI disconnection enabled	J3/B	closed
SCSI disconnection disabled	J3/B	open

BIOS ADDRESS SELECTION		
Address	J1/B	J1/C
í DC00h - DFFFFh	closed	closed
C800h - CBFFFh	open	open
CC00h - CFFFFh	open	closed
D800h - DBFFFh	closed	open

INTERRUPT CONFIGURATION						
IRQ	J1/E	J1/F	J1/G	J1/H	J3/C	J3/D
í 11	open	closed	open	open	closed	open
9	open	open	open	closed	open	open
10	open	open	closed	open	open	closed
12	closed	open	open	open	closed	closed