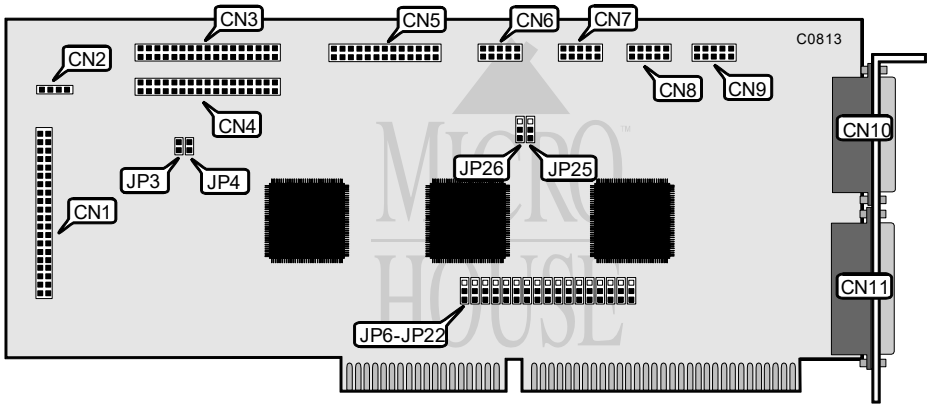


# MODULAR CIRCUIT TECHNOLOGY

## MCT-IMS+

Q2/95

Data bus: 16-bit ISA  
Size: Full-length, full-height card  
Hard drive supported: Two IDE (AT) Interface drives  
Floppy drives supported: Four 360KB, 720KB, 1.2MB, or 1.44MB drives



CONNECTIONS	
Function	Location
40 pin connector-IDE(AT) interface	CN1
4 pin connector-drive active LED	CN2
34 pin connector-floppy drive interface	CN3
34 pin connector-floppy drive interface	CN4
26 pin connector-parallel port(internal)	CN5
10 pin connector-serial port 1	CN6
10 pin connector-serial port 2	CN7
10 pin connector-serial port 3	CN8
10 pin connector-serial port 4	CN9
15 pin connector-game port(external)	CN10
25 pin connector-parallel port(external)	CN11

Continued on next page. . .

# MODULAR CIRCUIT TECHNOLOGY

## MCT-IMS+

...continued from previous page

USER CONFIGURABLE SETTINGS		
Function	Location	Setting
í Floppy drive interface enabled	JP3	closed
Floppy drive interface disabled	JP3	open
í On-card floppy drive interface is primary	JP4	open
On-card floppy drive interface is secondary	JP4	closed
í Serial port 1 address COM1 select	JP6	pins 2 & 3 closed
Serial port 1 address COM2 select	JP6	pins 1 & 2 closed
Serial port 1 disabled	JP6	all open
í Serial port 2 address COM2 select	JP7	pins 1 & 2 closed
Serial port 2 address COM1 select	JP7	pins 2 & 3 closed
Serial port 2 disabled	JP7	all open
í Serial port 3 address COM3 select	JP8	pins 2 & 3 closed
Serial port 3 address COM4 select	JP8	pins 1 & 2 closed
Serial port 3 disabled	JP8	all open
í Serial port 4 address COM4 select	JP9	pins 1 & 2 closed
Serial port 4 address COM3 select	JP9	pins 2 & 3 closed
Serial port 4 disabled	JP9	all open
í Parallel port 1 address select LPT1	JP10	pins 2 & 3 closed
Parallel port 1 address select LPT2	JP10	pins 1 & 2 closed
Parallel port 1 disabled	JP10	all open
í Parallel port 2 address select LPT2	JP11	pins 1 & 2 closed
Parallel port 2 address select LPT1	JP11	pins 2 & 3 closed
Parallel port 2 disabled	JP11	all open
í Serial port 1 interrupt IRQ4 enabled	JP12	pins 2 & 3 closed
Serial port 1 interrupt IRQ3 enabled	JP12	pins 1 & 2 closed
Serial port 1 disabled	JP12	all open
í Serial port 2 interrupt IRQ3 enabled	JP13	pins 1 & 2 closed
Serial port 2 interrupt IRQ4 enabled	JP13	pins 2 & 3 closed
Serial port 2 disabled	JP13	all open
í Serial port 3 interrupt IRQ4 enabled	JP14	pins 2 & 3 closed
Serial port 3 interrupt IRQ3 enabled	JP14	pins 1 & 2 closed
Serial port 3 interrupts IRQ3 & IRQ4 disabled	JP14	all open
í Serial port 4 interrupt IRQ3 enabled	JP15	pins 1 & 2 closed
Serial port 4 interrupt IRQ4 enabled	JP15	pins 2 & 3 closed
í Serial port 3 interrupts IRQ5 & IRQ9 disabled	JP16	all open
Serial port 3 interrupt IRQ5 enabled	JP16	pins 2 & 3 closed
Serial port 3 interrupt IRQ9 enabled	JP16	pins 1 & 2 closed

Continued on next page. . .

## MODULAR CIRCUIT TECHNOLOGY

### MCT-IMS+

...continued from previous page

USER CONFIGURABLE SETTINGS		
Function	Location	Setting
Serial port 4 interrupts IRQ5 & IRQ9 disabled	JP17	all open
Serial port 4 interrupt IRQ9 enabled	JP17	pins 1 & 2 closed
Serial port 4 interrupt IRQ5 enabled	JP17	pins 2 & 3 closed
Parallel port 1 interrupt IRQ7 enabled	JP18	pins 1 & 2 closed
Parallel port 1 interrupt IRQ5 enabled	JP18	pins 2 & 3 closed
Parallel port 1 interrupts disabled	JP18	all open
Parallel port 2 interrupt IRQ5 enabled	JP19	pins 2 & 3 closed
Parallel port 2 interrupt IRQ7 enabled	JP19	pins 1 & 2 closed
Parallel port 2 interrupts disabled	JP19	all open
IDE(AT) interface enabled	JP20	closed
IDE(AT) interface disabled	JP20	open
Serial port 3 interrupts IRQ10 & IRQ11 disabled	JP21	all open
Serial port 3 interrupt IRQ11 enabled	JP21	pins 1 & 2 closed
Serial port 3 interrupt IRQ10 enabled	JP21	pins 2 & 3 closed
Serial port 4 interrupts IRQ12 & IRQ15 disabled	JP22	all open
Serial port 4 interrupt IRQ15 enabled	JP22	pins 1 & 2 closed
Serial port 4 interrupt IRQ12 enabled	JP22	pins 2 & 3 closed
Parallel port 1 bi-directional mode enabled	JP25	pins 2 & 3 closed
Parallel port 1 bi-directional mode disabled	JP25	pins 1 & 2 closed
Parallel port 2 bi-directional mode enabled	JP26	pins 2 & 3 closed
Parallel port 2 bi-directional mode disabled	JP26	pins 1 & 2 closed
IDE interface enabled	JP20	closed
IDE interface disabled	JP20	open
Serial port 3 interrupt IRQ10 & IRQ11 disabled	JP21	all open
Serial port 3 interrupt IRQ11 enabled	JP21	pins 1 & 2 closed
Serial port 3 interrupt IRQ10 enabled	JP21	pins 2 & 3 closed