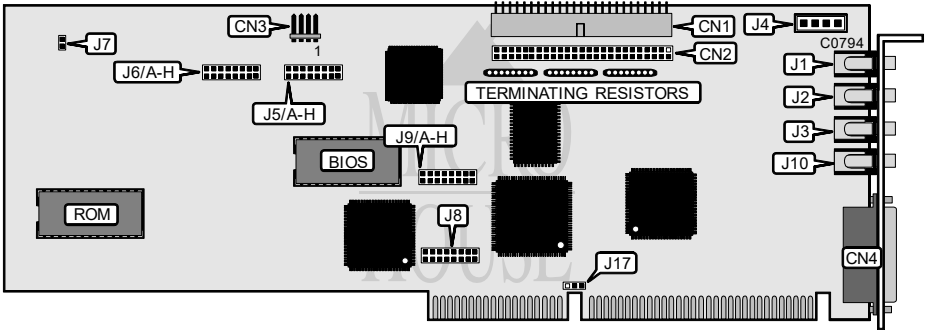


ADAPTEC, INC.  
AMM-1570

Q3/95

Data bus: 16-bit ISA  
Size: Full-length, full-height card  
Hard drive supported: Up to seven SCSI drives  
Floppy drives supported: Two 360KB, 720KB, 1.2MB, 1.44MB, or 2.88MB drives



CONNECTIONS	
Function	Location
50-pin SCSI connector - internal	CN1
50-pin SCSI connector - external	CN2
4-pin connector - drive active LED	CN3
15-pin game port - external	CN4
Headphone/speaker jack	J1
Line out	J2
Line in	J3
CD audio in	J4
Mic in	J10

Continued on next page. . .

# ADAPTEC, INC.

## AMM-1570

...continued from previous page

USER CONFIGURABLE SETTINGS		
Function	Location	Setting
í Factory configured - do not alter	J5/A	open
í INT 19h reroute enabled	J5/B	closed
INT 19h reroute disabled	J5/B	open
í Factory configured - do not alter	J5/C	open
í Fast SCSI disabled	J5/D	open
Fast SCSI enabled	J5/D	closed
í Synchronous negotiation disabled	J5/E	open
Synchronous negotiation enabled	J5/E	closed
í SCSI disconnection enabled	J5/F	closed
SCSI disconnection disabled	J5/F	open
í Floptical support disabled	J5/G	open
Floptical support enabled	J5/G	closed
í Extended translation disabled	J5/H	open
Extended translation enabled	J5/H	closed
í Factory configured - do not alter	J6/F	open
í Factory configured - do not alter	J6/G	open
í SCSI parity checking enabled	J6/H	open
SCSI parity checking disabled	J6/H	closed
í Floppy drive enabled	J7	closed
Floppy drive disabled	J7	open
í Factory configured - do not alter	J8	open
í I/O port address is 340h - 35Eh	J9/E	open
I/O port address is 140h - 15Eh	J9/E	closed
í Host adapter BIOS enabled	J9/H	closed
Host adapter BIOS disabled	J9/H	open

SCSI ID CONFIGURATION			
ID	J6/A	J6/B	J6/C
í 7	closed	closed	closed
0	open	open	open
1	closed	open	open
2	open	closed	open
3	closed	closed	open
4	open	open	closed
5	closed	open	closed
6	open	closed	closed

Continued on next page. . .

# ADAPTEC, INC.

## AMM-1570

...continued from previous page

INTERRUPT SELECTION						
IRQ	J6/D	J6/E	J9/A	J9/B	J9/C	J9/D
11	open	closed	open	closed	open	open
9	open	open	open	open	open	closed
10	closed	open	open	open	closed	open
12	closed	closed	closed	open	open	open

BIOS BASE ADDRESS SELECTION		
Address	J9/F	J9/G
DC000h - DFFFFh	closed	closed
C8000h - CBFFFh	open	open
CC000h - CFFFFh	open	closed
D8000h - DBFFFh	closed	open

SOUND CHIP BASE ADDRESS	
Address	J17
220h	pins 1 & 2 closed
240h	pins 2 & 3 closed
Invalid	open