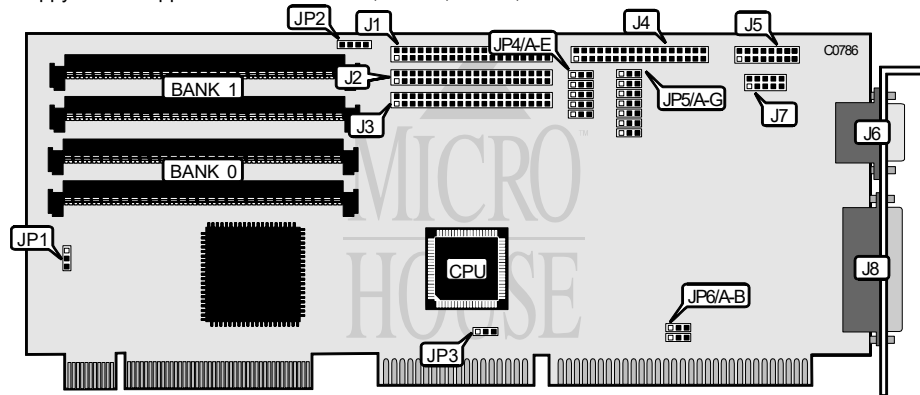


PROMISE TECHNOLOGY, INC. EIDE 4030 PLUS

Q3/95

Data bus: 32-bit VESA local bus
 Size: Three-quarter-length, full-height card
 Hard drive supported: Four IDE (AT) Interface drives
 Floppy drives supported: Two 360KB, 720KB, 1.2MB, 1.44MB drives



CONNECTIONS	
Function	Location
40-pin primary VESA IDE(AT) interface connector	J1
40-pin secondary VESA IDE(AT) interface connector	J2
40-pin ISA ATAPI IDE(AT) interface connector	J3
34-pin connector - floppy drive interface	J4
16-pin connector - game port (external)	J5
9-pin connector - serial port 1 (external)	J6
10-pin connector - serial port 2 (internal)	J7
25-pin parallel port (external)	J8
4-pin connector - drive active LED	JP2
Note: Connector J3 is used for IDE CD-ROM (ATAPI) and tape drives.	

USER CONFIGURABLE SETTINGS		
Function	Location	Setting
if VESA IDE is primary channel	JP1	pins 1 & 2 closed
VESA IDE is secondary channel	JP1	pins 2 & 3 closed
VESA IDE channel is disabled	JP1	all open
if ISA IDE(AT) interrupt IRQ15 select	JP3	pins 1 & 2 closed
ISA IDE(AT) interrupt IRQ14 select	JP3	pins 2 & 3 closed
if Game port enabled	JP4/A	pins 1 & 2 closed
Game port disabled	JP4/A	pins 2 & 3 closed
if Factory configured - do not alter	JP4/B	pins 1 & 2 closed

Continued on next page. . .

PROMISE TECHNOLOGY, INC.

EIDE 4030 PLUS

... continued from previous page

USER CONFIGURABLE SETTINGS (CONTINUED)		
Function	Location	Setting
í Floppy drive interface enabled	JP4/C	pins 1 & 2 closed
Floppy drive interface disabled	JP4/C	pins 2 & 3 closed
í Parallel port interrupt select IRQ7	JP5/A	pins 1 & 2 closed
Parallel port interrupt select IRQ5	JP5/A	pins 2 & 3 closed

PARALLEL PORT ADDRESS SELECTION		
Address	JP5/B	JP5/C
í 378h	pins 2 & 3 closed	pins 1 & 2 closed
278h	pins 1 & 2 closed	pins 1 & 2 closed
3BCh	pins 1 & 2 closed	pins 2 & 3 closed
Disabled	pins 2 & 3 closed	pins 2 & 3 closed

PRIMARY SERIAL PORT ADDRESS SELECTION		
Address	JP5/F	JP5/G
í 3F8h (COM1)	pins 1 & 2 closed	pins 1 & 2 closed
2F8h (COM2)	pins 2 & 3 closed	pins 1 & 2 closed
3E8h (COM3)	pins 1 & 2 closed	pins 2 & 3 closed
Disabled	pins 2 & 3 closed	pins 2 & 3 closed

SECONDARY SERIAL PORT ADDRESS SELECTION		
Address	JP5/D	JP5/E
í 2F8h (COM2)	pins 1 & 2 closed	pins 1 & 2 closed
3F8h (COM1)	pins 2 & 3 closed	pins 1 & 2 closed
2E8h (COM3)	pins 1 & 2 closed	pins 2 & 3 closed
Disabled	pins 2 & 3 closed	pins 2 & 3 closed

ISA IDE CONFIGURATION		
Setting	JP4/D	JP4/E
í ISA IDE(AT) interface is secondary interface	pins 1 & 2 closed	pins 1 & 2 closed
ISA IDE(AT) interface is primary interface	pins 1 & 2 closed	pins 2 & 3 closed
ISA IDE(AT) interface is disabled	pins 2 & 3 closed	pins 2 & 3 closed

DMA CHANNEL CONFIGURATION		
DMA	JP6/A	JP6/B
í 3	pins 2 & 3 closed	pins 2 & 3 closed
1	pins 1 & 2 closed	pins 1 & 2 closed

Continued on next page. . .

PROMISE TECHNOLOGY, INC.

EIDE 4030 PLUS

. . .continued from previous page

DRAM CONFIGURATION		
Size	Bank 0	Bank 1
512KB	(2) 256K x 9	NONE
1MB	(2) 256K x 9	(2) 256K x 9
2MB	(2) 1M x 9	NONE
4MB	(2) 1M x 9	(2) 1M x 9
8MB	(2) 4M x 9	NONE
16MB	(2) 4M x 9	(2) 4M x 9
Note: The EIDE 4030 PLUS must have at least 512KB installed in order to function. Optimum operation is achieved using 4 identical SIMM modules.		