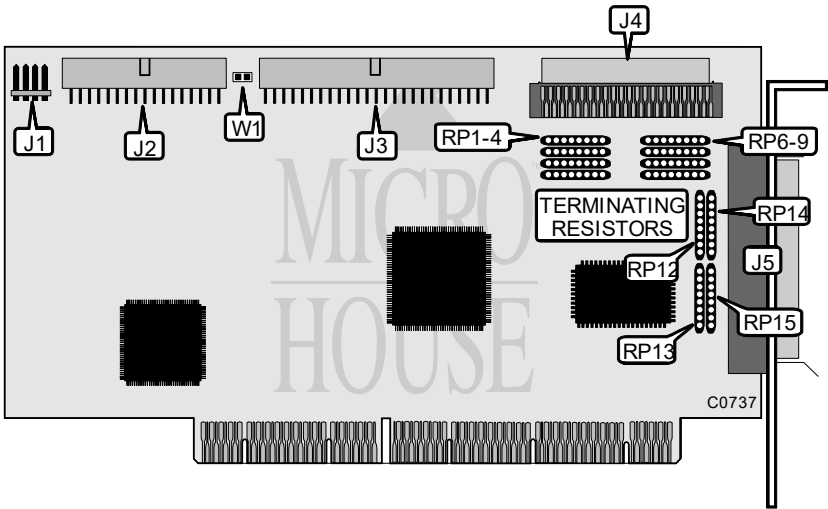


BUSLOGIC, INC.
BT-757C, BT-757CD

Data bus: 32-bit EISA
Size: Three-quarter length, full-height card
Hard drive supported: Up to fifteen SCSI devices
Floppy drives supported: Two 360KB, 720KB, 1.2MB, or 1.44MB drives



CONNECTIONS		
Function		Location
4-pin connector-drive active LED		J1
34-pin connector-floppy drive interface		J2
50-pin connector-SCSI interface (internal)		J3
68-pin connector-SCSI interface (internal)		J4
68-pin connector-SCSI interface (external)		J5

USER CONFIGURABLE SETTINGS		
Function	Jumper	Setting
Floppy drive interface enabled	W1	closed
Floppy drive interface disabled	W1	open
Note: The location of W1 is different in the C and CD models. For the C model, W1 is located between the floppy drive interface and the drive active LED connector.		

...continued from previous page

BUSLOGIC, INC. BT-757C, BT-757CD

...continued from previous page

TERMINATION POWER CONFIGURATION	
Setting	Terminators Installed
Data bits 0-7 terminated	RP1, RP2, RP3, RP4, RP6, RP7, RP8, RP9
Data bits 8-15 terminated	RP12, RP13, RP14, RP15
All signals terminated	All installed
Note: These settings apply only to the BT-757CD.	

MISCELLANEOUS TECHNICAL NOTES
The BT-757C and BT-757CD differ in that the 'C' model incorporates a single-ended interface and software controlled active termination, while the 'CD' model utilizes a differential interface and standard (i.e. differential) termination.