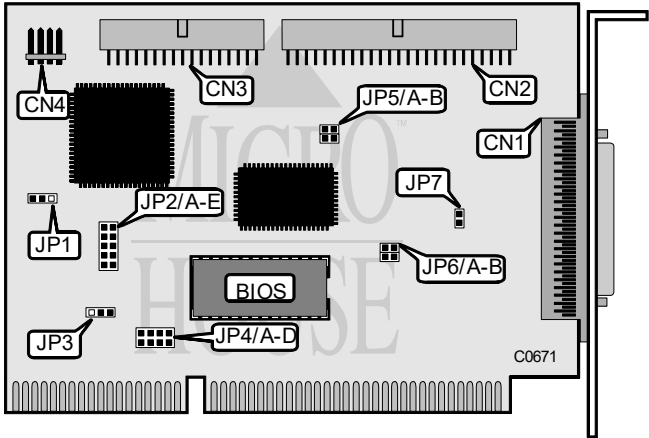


ATC/UNITRON COMPUTERS & COMPUTER PARTS
Q LOGIC CORPORATION
FAST!SCSI ISA FL

Q2/95

Data bus: 16-bit, ISA
Size: Half-length, full-height card
Hard drive supported: Up to seven SCSI devices
Floppy drives supported: Two 360KB, 720KB, 1.2MB, or 1.44MB drives



CONNECTIONS	
Function	Location
50-pin SCSI connector - external	CN1
50-pin SCSI connector - internal	CN2
34-pin Floppy drive connector	CN3
4-pin connector - Drive active LED	CN4

Continued on next page . . .

ATC/UNITRON COMPUTERS & COMPUTER PARTS

Q LOGIC CORPORATION

FAST!SCSI ISA FL

... continued from previous page

USER CONFIGURABLE SETTINGS		
Function	Location	Setting
í I/O Address - 330h	JP3	pins 1 & 2 closed
I/O Address - 230h	JP3	pins 2 & 3 closed
í Floppy drive - disabled	JP1	open
Floppy drive - enabled	JP1	closed
í SCSI termination - enabled	JP7	open
SCSI termination - disabled	JP7	closed
í Data transfer mode asynchronous	JP2/A	open
Data transfer mode synchronous	JP2/A	closed
í SCSI ID7	JP2/B	open
SCSI ID6	JP2/B	closed
í Parity - enabled	JP2/C	open
Parity - disabled	JP2/C	closed

BIOS SELECT		
Setting	JP6/A	JP6/B
í Enabled	closed	open
Disabled	open	open

BIOS ADDRESS SELECT		
Address	JP5/A	JP5/B
í C8000	open	open
CC000	open	closed
D8000	closed	open
DC000	closed	closed

INTERRUPT SELECT						
IRQ	JP4/A	JP4/B	JP4/C	JP4/D	JP2/D	JP2/E
í IRQ11	open	closed	open	open	open	open
IRQ10	closed	open	open	open	closed	open
IRQ12	open	open	closed	open	closed	closed
IRQ15	open	open	open	closed	open	closed