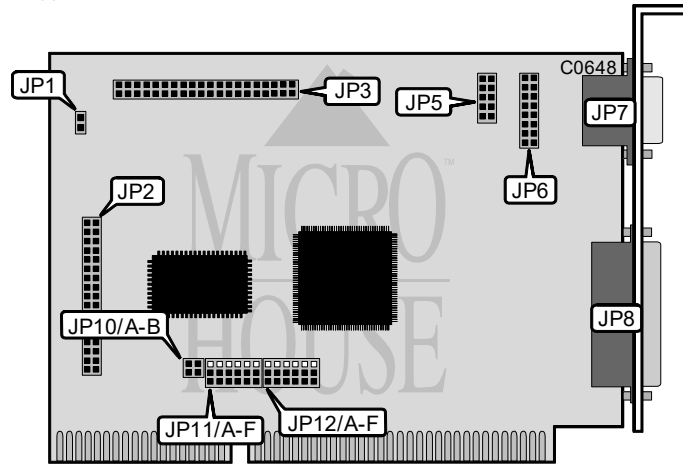


## SIIG, INC. SI-1132+

Q3/95

Data bus: 16-bit, ISA  
 Size: Half-length, full-height card  
 Hard drive supported: Two IDE (AT) Interface drives  
 Floppy drives supported: Two 360KB, 720KB, 1.2MB, 1.44MB, or 2.88MB drives



CONNECTIONS	
Function	Location
2-pin connector - drive active LED	JP1
34-pin control cable connector - floppy drive	JP2
40-pin IDE(AT) Interface connector	JP3
10-pin serial port 2 - internal	JP5
16-pin game port - internal	JP6
9-pin serial port - external	JP7
25-pin parallel port - external	JP8

Continued on next page . . .

# SIIG, INC, SI-1132+

... continued from previous page

USER CONFIGURABLE SETTINGS		
Function	Location	Setting
Parallel port uni-directional	JP10/A	closed
Parallel port bi-directional	JP10/A	open
Game port enabled	JP10/B	closed
Game port disabled	JP10/B	open
Floppy controller enabled	JP11/A pins 1 & 2	closed
Floppy controller disabled	JP11/A pins 2 & 3	closed
IDE (AT) interface enabled	JP11/B pins 1 & 2	closed
IDE (AT) interface disabled	JP11/B pins 2 & 3	closed
Floppy drive order A:, B: normal	JP11/C pins 1 & 2	closed
Floppy drive order A:, B: exchange	JP11/C pins 2 & 3	closed
Serial port 1 IRQ4 select	JP11/D pins 1 & 2	closed
Serial port 1 IRQ3 select	JP11/D pins 2 & 3	closed
Serial port 2 IRQ3 select	JP11/E pins 1 & 2	closed
Serial port 2 IRQ4 select	JP11/E pins 2 & 3	closed
Parallel port IRQ7 select	JP11/F pins 2 & 3	closed
Parallel port IRQ5 select	JP11/F pins 1 & 2	closed

SERIAL PORT 1 CONFIGURATION		
COM	JP12/A	JP12/B
COM1 (3F8h)	pins 1 & 2 closed	pins 1 & 2 closed
COM3 (3E8h)	pins 2 & 3 closed	pins 2 & 3 closed
Disabled	pins 2 & 3 closed	pins 1 & 2 closed

SERIAL PORT 2 CONFIGURATION		
COM	JP12/C	JP12/D
COM2 (2F8h)	pins 1 & 2 closed	pins 1 & 2 closed
COM4 (2E8h)	pins 2 & 3 closed	pins 2 & 3 closed
Disabled	pins 2 & 3 closed	pins 1 & 2 closed

PARALLEL PORT CONFIGURATION		
LPT	JP12/E	JP12/F
LPT2 (378h)	pins 1 & 2 closed	pins 1 & 2 closed
LPT1 (3BCh)	pins 2 & 3 closed	pins 1 & 2 closed
LPT3 (278h)	pins 2 & 3 closed	pins 2 & 3 closed
Disabled	pins 1 & 2 closed	pins 2 & 3 closed