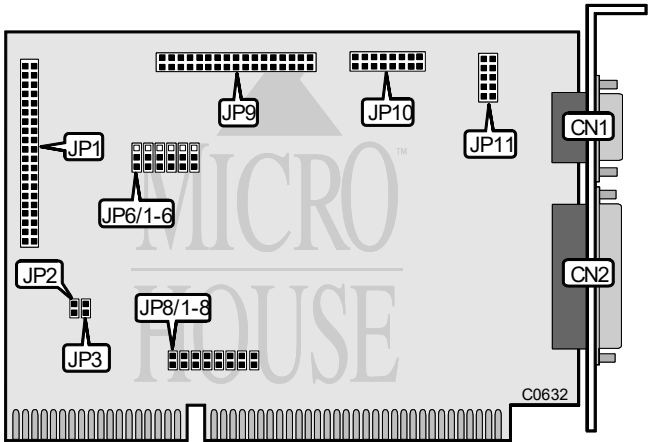


MAGITRONICS  
A-B 229W

Q3/95

Data bus: 16-bit, ISA  
Size: Half-length, full-height card  
Hard drives supported: Two IDE (AT) interface drives  
Floppy drives supported: Two 360KB, 720KB, 1.2MB or 1.44MB drives



CONNECTIONS		
Function	Location	
9-pin serial port 1 (COM1) - external	CN1	
25-pin parallel port - external	CN2	
40-pin IDE (AT) Interface connector	JP1	
2-pin connector - drive active LED	JP2	
34-pin control cable connector - floppy drive	JP9	
16-pin game port - internal	JP10	
10-pin serial port 2 (COM2) - internal	JP11	

USER CONFIGURABLE SETTINGS		
Function	Location	Setting
One drive in a system	JP3	closed
Two drives in a system	JP3	open

Continued on next page . . .

# MAGITRONICS

## A-B 229W

... continued from previous page

SERIAL PORT 1 CONFIGURATION		
COM	JP6/Jumper 1	JP6/Jumper 2
í COM1 (3F8h)	pins 2 & 3 closed	pins 1 & 2 closed
COM3 (3E8h)	pins 1 & 2 closed	pins 2 & 3 closed
COM4 (2E8h)	pins 2 & 3 closed	pins 2 & 3 closed
Disabled	pins 1 & 2 closed	pins 1 & 2 closed

SERIAL PORT 2 CONFIGURATION		
COM	JP6/Jumper 3	JP6/Jumper 4
í COM2 (2F8h)	pins 2 & 3 closed	pins 1 & 2 closed
COM3 (3E8h)	pins 2 & 3 closed	pins 2 & 3 closed
COM4 (2E8h)	pins 1 & 2 closed	pins 2 & 3 closed
Disabled	pins 1 & 2 closed	pins 1 & 2 closed

PARALLEL PORT 2 CONFIGURATION		
LPT	JP6/Jumper 5	JP6/Jumper 6
í LPT1 (3BCH)	pins 2 & 3 closed	pins 2 & 3 closed
LPT2 (378H)	pins 1 & 2 closed	pins 2 & 3 closed
LPT3 (278H)	pins 2 & 3 closed	pins 1 & 2 closed
Disabled	pins 1 & 2 closed	pins 1 & 2 closed

SERIAL PORT 1 INTERRUPT SELECT			
IRQ	JP8/Jumper 1	JP8/Jumper 2	JP8/Jumper 3
í IRQ4	closed	open	open
IRQ3	open	closed	open
IRQ5	open	open	closed

SERIAL PORT 2 INTERRUPT SELECT			
IRQ	JP8/Jumper 4	JP8/Jumper 5	JP8/Jumper 6
í IRQ3	closed	open	open
IRQ4	open	closed	open
IRQ5	open	open	closed

PARALLEL PORT INTERRUPT SELECT		
IRQ	JP8/Jumper 7	JP8/Jumper 8
í IRQ7	closed	open
IRQ5	open	closed