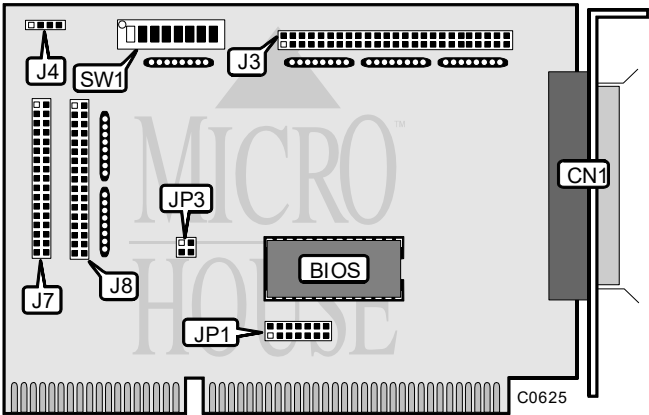


TRANTOR SYSTEMS, LTD.  
T160F

Q2/95

Data bus: 16-bit, ISA  
Size: Half-length, full-height card  
Hard drives supported: Up to seven SCSI devices



CONNECTIONS	
Function	Location
25-pin SCSI connector-external	CN1
50-pin SCSI connector-internal	J3
4-pin connector - drive active LED	J4
34-pin floppy connector	J7
34-pin floppy connector	J8

INTERRUPT REQUEST - JP1							
IRQ	Jumper 1	Jumper 2	Jumper 3	Jumper 4	Jumper 5	Jumper 6	Jumper 7
í none	open	open	open	open	open	open	open
IRQ3	closed	open	open	open	open	open	open
IRQ5	open	closed	open	open	open	open	open
IRQ7	open	open	closed	open	open	open	open
IRQ10	open	open	open	closed	open	open	open
IRQ12	open	open	open	open	closed	open	open
IRQ14	open	open	open	open	open	close	open
IRQ15	open	open	open	open	open	open	closed

Continued on next page . . .

# TRANTOR SYSTEMS, LTD. T160F

... continued from previous page

I/O PORT ADDRESS - SW1			
Address	Switch 1	Switch 2	Switch 3
í 360h	off	off	off
230h	on	on	on
240h	on	on	off
250h	on	off	on
260h	on	off	off
330h	off	on	on
340h	off	on	off
350h	off	off	on

BIOS ADDRESS - SW1			
Address	Switch 4	Switch 5	Switch 6
í Disabled	off	off	off
C8000h	off	off	on
CA000h	off	on	off
CE000h	off	on	on
D0000h	on	off	off
D4000h	on	off	on
D8000h	on	on	off
DC000h	on	on	on

MISCELLANEOUS TECHNICAL NOTES	
SW1 switches 7 and 8 are factory configured - do not alter.	
JP3 is factory configured - do not alter.	