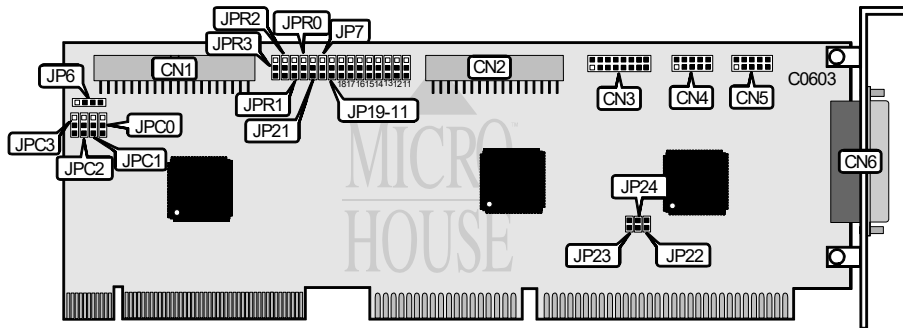


UNIDENTIFIED MI3210V

Data bus: 32-bit VESA
 Size: Full-length, half-height card
 Hard drive supported: Two IDE (AT) Interface drives
 Floppy drives supported: Two 360KB, 720KB, 1.2MB, or 1.44MB drives



CONNECTIONS	
Function	Location
40-pin connector - VL/IDE drive interface	CN1
34-pin connector - Floppy drive interface	CN2
16-pin connector - Game port	CN3
10-pin connector - Serial port 1	CN4
10-pin connector - Serial port 2	CN5
25-pin connector - parallel port	CN6
4-pin connector - drive activity LED	JP6

ROM ADDRESS		
Address	JP23	JP24
C800:0	Open	Open
CC00:0	Closed	Open
D800:0	Open	Closed
DC00:0	Closed	Closed

Continued on next page. . .

**UNIDENTIFIED
MI3210V**

...continued from previous page

USER CONFIGURABLE SETTINGS		
Function	Location	Setting
i IDE drive / Floppy drive enabled	JP7	pins 1 & 2 closed
IDE drive / Floppy drive disabled	JP7	pins 2 & 3 closed
i Printer enabled	JP11	pins 1 & 2 closed
Printer disabled	JP11	pins 2 & 3 closed
i Hard drive controller enabled	JP12	pins 2 & 3 closed
Hard drive controller disabled	JP12	pins 1 & 2 closed
i COM 1/3 enabled	JP13	pins 1 & 2 closed
COM 1/3 disabled	JP13	pins 2 & 3 closed
i COM 2/4 enabled	JP15	pins 1 & 2 closed
COM 2/4 disabled	JP15	pins 2 & 3 closed
i Floppy drive controller enabled	JP16	pins 1 & 2 closed
Floppy drive controller disabled	JP16	pins 2 & 3 closed
i Game port enabled	JP19	pins 1 & 2 closed
Game port disabled	JP19	pins 2 & 3 closed
i ROM enabled	JP22	Open
ROM disabled	JP22	Closed

SERIAL PORT(S) ADDRESS			
Port 1	Port 2	JP14 (CN4)	JP18 (CN5)
COM1	COM2	pins 1 & 2 closed	pins 1 & 2 closed
COM1	COM4	pins 1 & 2 closed	pins 2 & 3 closed
COM3	COM2	pins 2 & 3 closed	pins 1 & 2 closed
COM3	COM4	pins 2 & 3 closed	pins 2 & 3 closed

PARALLEL PORT ADDRESS - JP6	
Address	JP17
LPT2	pins 1 & 2 closed
LPT3	pins 2 & 3 closed

Continued on next page . . .

UNIDENTIFIED

MI3210V

...continued from previous page

IDE DRIVE ACTIVE/RECOVERY TIME (33MHZ VESA CLOCK)				
HDD Type	JPC0	JPC1	JPC2	JPC3
Quantum LP52	pins 1 & 2	pins 2 & 3	pins 2 & 3	pins 2 & 3
Quantum ELS85AT	pins 1 & 2	pins 2 & 3	pins 2 & 3	pins 2 & 3
Quantum LP110	pins 1 & 2	pins 2 & 3	pins 2 & 3	pins 2 & 3
Quantum ELS127A	pins 2 & 3	pins 1 & 2	pins 2 & 3	pins 2 & 3
Quantum 240AT	pins 2 & 3	pins 1 & 2	pins 2 & 3	pins 2 & 3
Quantum 525AT	pins 1 & 2	pins 2 & 3	pins 2 & 3	pins 2 & 3
Conner CP30084	pins 1 & 2	pins 2 & 3	pins 1 & 2	pins 2 & 3
Conner CP30174	pins 2 & 3	pins 1 & 2	pins 2 & 3	pins 2 & 3
Conner CP30104	pins 1 & 2	pins 2 & 3	pins 1 & 2	pins 2 & 3
Conner CP30204	pins 2 & 3	pins 1 & 2	pins 2 & 3	pins 2 & 3
Conner CP3020A	pins 1 & 2	pins 2 & 3	pins 2 & 3	pins 2 & 3
Conner CP30254	pins 2 & 3	pins 1 & 2	pins 2 & 3	pins 2 & 3
Conner CP3000	pins 2 & 3	pins 1 & 2	pins 2 & 3	pins 2 & 3
Conner CP3544	pins 2 & 3	pins 1 & 2	pins 2 & 3	pins 2 & 3
Conner CP-3104	pins 1 & 2	pins 1 & 2	pins 2 & 3	pins 1 & 2
Maxtor 7080A	pins 1 & 2	pins 2 & 3	pins 1 & 2	pins 2 & 3
Maxtor 7213A	pins 2 & 3	pins 1 & 2	pins 2 & 3	pins 2 & 3
Maxtor 7245A	pins 2 & 3	pins 1 & 2	pins 2 & 3	pins 2 & 3
WD SP4200	pins 1 & 2	pins 2 & 3	pins 2 & 3	pins 2 & 3
WD AC1170	pins 1 & 2	pins 2 & 3	pins 2 & 3	pins 2 & 3
WD AC2200	pins 1 & 2	pins 2 & 3	pins 2 & 3	pins 2 & 3
WD AC2250	pins 1 & 2	pins 2 & 3	pins 2 & 3	pins 2 & 3
WD AC2340	pins 2 & 3	pins 1 & 2	pins 2 & 3	pins 2 & 3
Seagate ST3541A	pins 1 & 2	pins 2 & 3	pins 1 & 2	pins 2 & 3
Seagate ST3120A	pins 2 & 3	pins 1 & 2	pins 2 & 3	pins 2 & 3
Seagate ST3144A	pins 2 & 3	pins 1 & 2	pins 2 & 3	pins 2 & 3
Seagate ST3283A	pins 2 & 3	pins 1 & 2	pins 2 & 3	pins 2 & 3
Seagate ST4180A	pins 2 & 3	pins 1 & 2	pins 2 & 3	pins 2 & 3
Alps DR 311C	pins 2 & 3	pins 1 & 2	pins 2 & 3	pins 2 & 3
TEAC SD340	pins 2 & 3	pins 1 & 2	pins 2 & 3	pins 2 & 3
Toshiba MK234	pins 1 & 2	pins 1 & 2	pins 2 & 3	pins 1 & 2
Other IDE drive	pins 1 & 2	pins 2 & 3	pins 1 & 2	pins 2 & 3

Note: The pins designated are in the closed position.

Continued on next page . . .

UNIDENTIFIED

MI3210V

...continued from previous page

IDE DRIVE ACTIVE/RECOVERY TIME (33MHZ VESA CLOCK) c n't				
HDD Type	JPR0	JPR1	JPR2	JPR3
Quantum LP52	pins 1 & 2	pins 2 & 3	pins 2 & 3	pins 1 & 2
Quantum ELS85AT	pins 1 & 2	pins 2 & 3	pins 2 & 3	pins 1 & 2
Quantum LP110	pins 1 & 2	pins 2 & 3	pins 2 & 3	pins 1 & 2
Quantum ELS127A	pins 1 & 2	pins 2 & 3	pins 2 & 3	pins 1 & 2
Quantum 240AT	pins 1 & 2	pins 2 & 3	pins 2 & 3	pins 1 & 2
Quantum 525AT	pins 1 & 2	pins 2 & 3	pins 2 & 3	pins 1 & 2
Conner CP30084	pins 1 & 2	pins 1 & 2	pins 2 & 3	pins 1 & 2
Conner CP30174	pins 1 & 2	pins 2 & 3	pins 2 & 3	pins 1 & 2
Conner CP30104	pins 2 & 3	pins 1 & 2	pins 2 & 3	pins 1 & 2
Conner CP30204	pins 2 & 3	pins 2 & 3	pins 2 & 3	pins 1 & 2
Conner CP3020A	pins 2 & 3	pins 2 & 3	pins 2 & 3	pins 1 & 2
Conner CP30254	pins 2 & 3	pins 2 & 3	pins 2 & 3	pins 1 & 2
Conner CP3000	pins 1 & 2	pins 1 & 2	pins 2 & 3	pins 1 & 2
Conner CP3544	pins 2 & 3	pins 2 & 3	pins 2 & 3	pins 1 & 2
Conner CP-3104	pins 2 & 3	pins 2 & 3	pins 1 & 2	pins 2 & 3
Maxtor 7080A	pins 1 & 2	pins 1 & 2	pins 2 & 3	pins 1 & 2
Maxtor 7213A	pins 2 & 3	pins 1 & 2	pins 2 & 3	pins 1 & 2
Maxtor 7245A	pins 2 & 3	pins 1 & 2	pins 2 & 3	pins 1 & 2
WD SP4200	pins 2 & 3	pins 1 & 2	pins 2 & 3	pins 1 & 2
WD AC1170	pins 1 & 2	pins 2 & 3	pins 2 & 3	pins 1 & 2
WD AC2200	pins 2 & 3	pins 1 & 2	pins 2 & 3	pins 1 & 2
WD AC2250	pins 1 & 2	pins 2 & 3	pins 2 & 3	pins 1 & 2
WD AC2340	pins 2 & 3	pins 2 & 3	pins 2 & 3	pins 1 & 2
Seagate ST3541A	pins 1 & 2	pins 1 & 2	pins 2 & 3	pins 1 & 2
Seagate ST3120A	pins 1 & 2	pins 2 & 3	pins 2 & 3	pins 1 & 2
Seagate ST3144A	pins 1 & 2	pins 2 & 3	pins 2 & 3	pins 1 & 2
Seagate ST3283A	pins 1 & 2	pins 2 & 3	pins 2 & 3	pins 1 & 2
Seagate ST4180A	pins 1 & 2	pins 2 & 3	pins 2 & 3	pins 1 & 2
Alps DR 311C	pins 1 & 2	pins 2 & 3	pins 2 & 3	pins 1 & 2
TEAC SD340	pins 1 & 2	pins 1 & 2	pins 2 & 3	pins 1 & 2
Toshiba MK234	pins 1 & 2	pins 1 & 2	pins 2 & 3	pins 1 & 2
Other IDE drive	pins 1 & 2	pins 2 & 3	pins 1 & 2	pins 1 & 2
Note:	The pins designated are in the closed position.			

Continued on next page . . .

UNIDENTIFIED

MI3210V

...continued from previous page

IDE DRIVE ACTIVE/RECOVERY TIME (50MHZ VESA CLOCK)				
HDD Type	JPC0	JPC1	JPC2	JPC3
Quantum LP52	pins 1 & 2	pins 1 & 2	pins 2 & 3	pins 2 & 3
Quantum ELS85AT	pins 1 & 2	pins 1 & 2	pins 2 & 3	pins 2 & 3
Quantum LP110	pins 1 & 2	pins 1 & 2	pins 2 & 3	pins 2 & 3
Quantum ELS127A	pins 2 & 3	pins 2 & 3	pins 1 & 2	pins 2 & 3
Quantum 240AT	pins 2 & 3	pins 2 & 3	pins 1 & 2	pins 2 & 3
Quantum 525AT	pins 1 & 2	pins 1 & 2	pins 2 & 3	pins 2 & 3
Conner CP30084	pins 1 & 2	pins 1 & 2	pins 1 & 2	pins 2 & 3
Conner CP30174	pins 2 & 3	pins 2 & 3	pins 1 & 2	pins 2 & 3
Conner CP30104	pins 1 & 2	pins 1 & 2	pins 1 & 2	pins 2 & 3
Conner CP30204	pins 2 & 3	pins 2 & 3	pins 1 & 2	pins 2 & 3
Conner CP3020A	pins 1 & 2	pins 1 & 2	pins 2 & 3	pins 2 & 3
Conner CP30254	pins 2 & 3	pins 2 & 3	pins 1 & 2	pins 2 & 3
Conner CP3000	pins 2 & 3	pins 2 & 3	pins 1 & 2	pins 2 & 3
Conner CP3544	pins 2 & 3	pins 2 & 3	pins 1 & 2	pins 2 & 3
Conner CP-3104	pins 1 & 2	pins 2 & 3	pins 2 & 3	pins 1 & 2
Maxtor 7080A	pins 1 & 2	pins 1 & 2	pins 1 & 2	pins 2 & 3
Maxtor 7213A	pins 2 & 3	pins 2 & 3	pins 1 & 2	pins 2 & 3
Maxtor 7245A	pins 2 & 3	pins 2 & 3	pins 1 & 2	pins 2 & 3
WD SP4200	pins 1 & 2	pins 1 & 2	pins 2 & 3	pins 2 & 3
WD AC1170	pins 1 & 2	pins 1 & 2	pins 2 & 3	pins 2 & 3
WD AC2200	pins 1 & 2	pins 1 & 2	pins 2 & 3	pins 2 & 3
WD AC2250	pins 1 & 2	pins 1 & 2	pins 2 & 3	pins 2 & 3
WD AC2340	pins 2 & 3	pins 2 & 3	pins 1 & 2	pins 2 & 3
Seagate ST3541A	pins 1 & 2	pins 1 & 2	pins 1 & 2	pins 2 & 3
Seagate ST3120A	pins 2 & 3	pins 2 & 3	pins 1 & 2	pins 2 & 3
Seagate ST3144A	pins 2 & 3	pins 2 & 3	pins 1 & 2	pins 2 & 3
Seagate ST3283A	pins 2 & 3	pins 2 & 3	pins 1 & 2	pins 2 & 3
Seagate ST4180A	pins 2 & 3	pins 2 & 3	pins 1 & 2	pins 2 & 3
Alps DR 311C	pins 2 & 3	pins 2 & 3	pins 1 & 2	pins 2 & 3
TEAC SD340	pins 2 & 3	pins 2 & 3	pins 1 & 2	pins 2 & 3
Toshiba MK234	pins 1 & 2	pins 2 & 3	pins 2 & 3	pins 1 & 2
Other IDE drive	pins 1 & 2	pins 1 & 2	pins 1 & 2	pins 2 & 3

Note: The pins designated are in the closed position.

Continued on next page . . .

UNIDENTIFIED

MI3210V

...continued from previous page

IDE DRIVE ACTIVE/RECOVERY TIME (50MHZ VESA CLOCK) c n't				
HDD Type	JPR0	JPR1	JPR2	JPR3
Quantum LP52	pins 1 & 2	pins 2 & 3	pins 1 & 2	pins 2 & 3
Quantum ELS85AT	pins 1 & 2	pins 2 & 3	pins 1 & 2	pins 2 & 3
Quantum LP110	pins 1 & 2	pins 2 & 3	pins 1 & 2	pins 2 & 3
Quantum ELS127A	pins 2 & 3	pins 2 & 3	pins 1 & 2	pins 2 & 3
Quantum 240AT	pins 1 & 2	pins 2 & 3	pins 1 & 2	pins 2 & 3
Quantum 525AT	pins 1 & 2	pins 2 & 3	pins 1 & 2	pins 2 & 3
Conner CP30084	pins 2 & 3	pins 2 & 3	pins 1 & 2	pins 1 & 2
Conner CP30174	pins 1 & 2	pins 2 & 3	pins 1 & 2	pins 2 & 3
Conner CP30104	pins 1 & 2	pins 1 & 2	pins 1 & 2	pins 2 & 3
Conner CP30204	pins 2 & 3	pins 2 & 3	pins 1 & 2	pins 2 & 3
Conner CP3020A	pins 2 & 3	pins 2 & 3	pins 1 & 2	pins 2 & 3
Conner CP30254	pins 2 & 3	pins 2 & 3	pins 1 & 2	pins 2 & 3
Conner CP3000	pins 2 & 3	pins 2 & 3	pins 1 & 2	pins 1 & 2
Conner CP3544	pins 1 & 2	pins 1 & 2	pins 2 & 3	pins 1 & 2
Conner CP-3104	pins 2 & 3	pins 1 & 2	pins 1 & 2	pins 1 & 2
Maxtor 7080A	pins 2 & 3	pins 2 & 3	pins 1 & 2	pins 1 & 2
Maxtor 7213A	pins 1 & 2	pins 1 & 2	pins 1 & 2	pins 2 & 3
Maxtor 7245A	pins 1 & 2	pins 1 & 2	pins 1 & 2	pins 2 & 3
WD SP4200	pins 1 & 2	pins 1 & 2	pins 1 & 2	pins 2 & 3
WD AC1170	pins 1 & 2	pins 2 & 3	pins 1 & 2	pins 2 & 3
WD AC2200	pins 1 & 2	pins 1 & 2	pins 1 & 2	pins 2 & 3
WD AC2250	pins 1 & 2	pins 2 & 3	pins 1 & 2	pins 2 & 3
WD AC2340	pins 2 & 3	pins 2 & 3	pins 1 & 2	pins 2 & 3
Seagate ST3541A	pins 2 & 3	pins 2 & 3	pins 1 & 2	pins 1 & 2
Seagate ST3120A	pins 1 & 2	pins 2 & 3	pins 1 & 2	pins 2 & 3
Seagate ST3144A	pins 1 & 2	pins 2 & 3	pins 1 & 2	pins 2 & 3
Seagate ST3283A	pins 1 & 2	pins 2 & 3	pins 1 & 2	pins 2 & 3
Seagate ST4180A	pins 1 & 2	pins 2 & 3	pins 1 & 2	pins 2 & 3
Alps DR 311C	pins 1 & 2	pins 2 & 3	pins 1 & 2	pins 2 & 3
TEAC SD340	pins 2 & 3	pins 2 & 3	pins 1 & 2	pins 1 & 2
Toshiba MK234	pins 2 & 3	pins 2 & 3	pins 1 & 2	pins 1 & 2
Other IDE drive	pins 2 & 3	pins 2 & 3	pins 1 & 2	pins 1 & 2
Note:	The pins designated are in the closed position.			