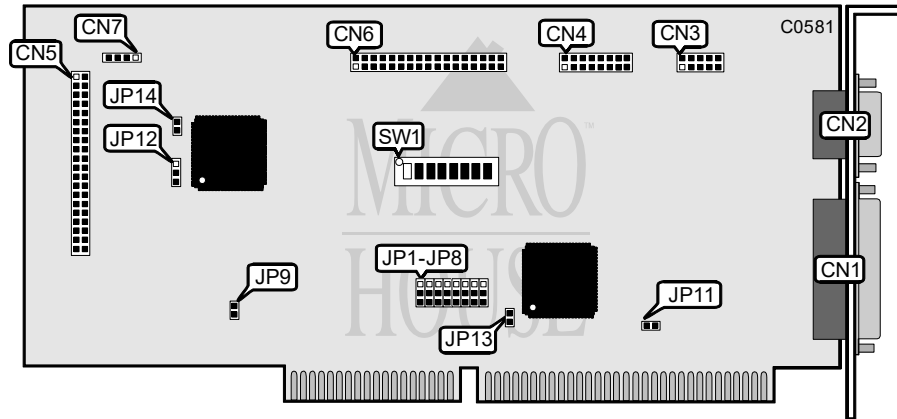


# INFORMTECH INTERNATIONAL, INC.

## IT-PACK5 VER.1.0

Data bus: 16-bit ISA  
 Size: Mid-length, full-height card  
 Hard drive supported: Two IDE (AT) Interface drives  
 Floppy drives supported: Two 360KB, 720KB, 1.2MB, 1.44MB, or 2.88MB drives



CONNECTIONS	
Function	Location
25-pin parallel port external	CN1
10-pin serial port external	CN2
10-pin serial port internal	CN3
15-pin game port internal	CN4
40-pin IDE (AT) Interface connector	CN5
34-pin control cable connector floppy drive	CN6
4-pin connector - Drive active LED	CN7

USER CONFIGURABLE SETTINGS		
Function	Location	Setting
Parallel Port IRQ7	JP1	Pins 2 & 3 closed
Parallel Port IRQ5	JP1	Pins 1 & 2 closed
Hard disk primary address - 1F0 - 1F7h	JP9	Open
Hard disk secondary address - 170 - 177h	JP9	Closed
Parallel port is uni-directional	JP13	Open
Parallel port is bi-directional	JP13	Closed

*Continued on next page . . .*

# INFORMTECH INTERNATIONAL, INC.

## IT-PACK5 VER.1.0

... continued from previous page

USER CONFIGURABLE SETTINGS		
Function	Location	Setting
Serial Port 1 enabled	SW1/1	On
Serial Port 1 disabled	SW1/1	Off
Serial Port 2 enabled	SW1/2	On
Serial Port 2 disabled	SW1/2	Off
Floppy drive port address is 3F0-3F7h	SW1/8	Off
Floppy drive port address is 370-377h	SW1/8	On

SERIAL PORT 1 INTERRUPT REQUEST						
IRQ	JP2	JP4	JP5	JP6	JP7	JP8
IRQ4	All open	1 & 2	All open	All open	All open	All open
IRQ9	1 & 2	All open	All open	All open	All open	All open
IRQ10	All open	All open	1 & 2	All open	All open	All open
IRQ11	All open	All open	All open	1 & 2	All open	All open
IRQ12	All open	All open	All open	All open	1 & 2	All open
IRQ15	All open	All open	All open	All open	All open	1 & 2

SERIAL PORT 2 INTERRUPT REQUEST						
IRQ	JP2	JP3	JP5	JP6	JP7	JP8
IRQ3	Open	2 & 3	All open	All open	All open	All open
IRQ9	2 & 3	All open	All open	All open	All open	All open
IRQ10	All open	All open	2 & 3	All open	All open	All open
IRQ11	All open	All open	All open	2 & 3	All open	All open
IRQ12	All open	All open	All open	All open	2 & 3	All open
IRQ15	All open	All open	All open	All open	All open	2 & 3

SERIAL PORT CONFIGURATION				
Port 1	Port 2	SW1/3	SW1/4	SW1/5
COM1	COM2	On	On	On
COM2	COM3	On	On	Off
COM2	COM3	On	Off	On
COM3	COM4	On	Off	Off
COM3	COM4	Off	On	On
COM3	COM4	Off	On	Off
COM3	COM4	Off	Off	On
Disabled	Disabled	Off	Off	Off

Continued on next page ...

**INFORMTECH INTERNATIONAL, INC.**  
**IT-PACK5 VER.1.0**

... continued from previous page

PARALLEL PORT (P1) CONFIGURATION		
LPT	SW1/6	SW1/7
LPT1 - 378h	Off	On
LPT2 - 278h	On	On
MDA - 3BCh	On	Off
Disabled	Off	Off

MISCELLANEOUS TECHNICAL NOTES
Jumpers JP11 and JP12 and JP14 are factory configured - do not alter.