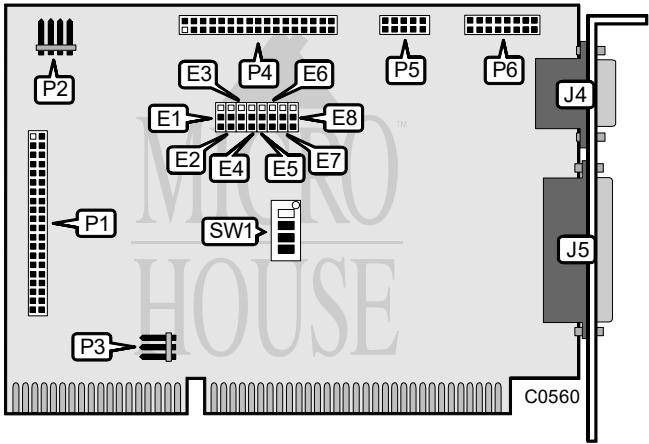


SILICON VALLEY COMPUTER, INC.
ADP70LB

Q3/94

Data bus: 16-bit, ISA
Size: Half-length, full-height card
Hard drive supported: Two IDE (AT) Interface drives
Floppy drives supported: Two 360KB, 720KB, 1.2MB, or 1.44MB drives



CONNECTIONS	
Function	Location
40-pin IDE (AT) interface connector	P1
4-pin connector - drive active LED	P2
5-pin connector - DC power	P3
34-pin control cable connector - floppy drive	P4
10-pin serial port 2 (COM2/4) - internal	P5
16-pin game port - internal	P6
10-pin serial port 1 (COM1/3) - external	J4
25-pin parallel port (LPT1/2) - external	J5

USER CONFIGURABLE SETTINGS		
Function	Location	Setting
i Floppy drive enabled	E7	Pins 2 & 3 closed
Floppy drive disabled	E7	Pins 1 & 2 closed
i Hard drive enabled	E8	Pins 2 & 3 closed
Hard drive disabled	E8	Pins 1 & 2 closed
i Factory configured - do not alter	SW1/1	N/A

Continued on next page . . .

SILICON VALLEY COMPUTER, INC.

ADP70LB

... continued from previous page

SERIAL PORT 1 (J4) CONFIGURATION			
COM/Address		E1	E2
f	COM1/3E8h	Pins 2 & 3 closed	Pins 2 & 3 closed
	COM3/3F8h	Pins 2 & 3 closed	Pins 1 & 2 closed
	Disabled	Pins 1 & 2 closed	N/A

SERIAL PORT 2 (P5) CONFIGURATION			
COM/Address		E3	E4
f	COM2/2F8h	Pins 2 & 3 closed	Pins 2 & 3 closed
	COM4/2E8h	Pins 2 & 3 closed	Pins 1 & 2 closed
	Disabled	Pins 1 & 2 closed	N/A

PARALLEL PORT (J5) CONFIGURATION			
LPT/Address		E5	E6
f	LPT2/378h	Pins 2 & 3 closed	Pins 2 & 3 closed
	LPT3/278h	Pins 2 & 3 closed	Pins 1 & 2 closed
	Disabled	Pins 1 & 2 closed	N/A

ONBOARD BIOS				
Address		SW1/2	SW1/3	SW1/4
f	Disabled	Off	Off	Off
	D8000h - D9FFFh	On	On	On
	D4000h - D5FFFh	On	On	Off
	D2000h - D3FFFh	On	Off	On
	D0000h - D1FFFh	On	Off	Off
	CC000h - CDFFFh	Off	On	On
	CA000h - CBFFFh	Off	On	Off
	C8000h - C9FFFh	Off	Off	On
Note: (1) HDD type number must be set to 1 if ADP70LB BIOS is used. (2) Manufacturer recommends using system BIOS if possible.				