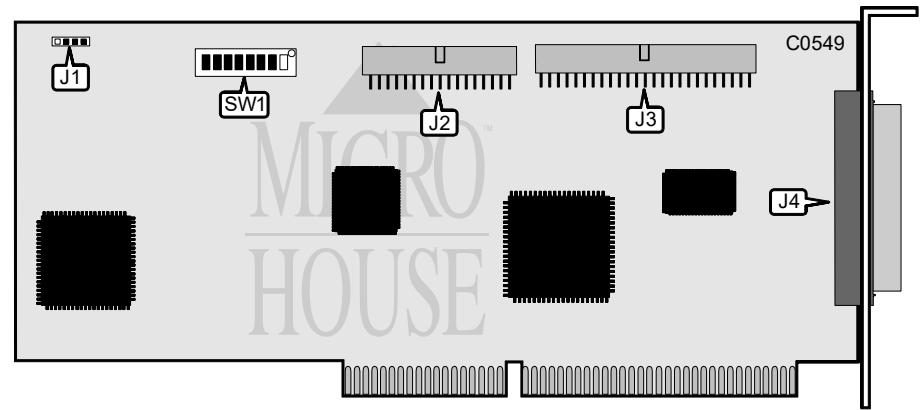


BUSLOGIC, INC.
BT-545C

Q4/94

Data bus: 16-bit, ISA-bus
Size: Full-length, full-height card
Hard drive supported: Up to seven SCSI devices
Floppy drives supported: 360KB, 720KB, 1.2MB, 1.44MB, or 2.88MB drives



CONNECTIONS	
Function	Location
4-pin connector - drive active LED	J1
34-pin connector - floppy drive interface	J2
50-pin connector - internal SCSI interface	J3
50-pin connector - external SCSI-2 connector	J4

USER CONFIGURABLE SETTINGS		
Function	Location	Setting
i Factory configured - do not alter	SW1/4	N/A
i Floppy connector enabled	SW1/8	On
Floppy connector disabled	SW1/8	Off

Continued on next page . . .

BUSLOGIC, INC.
BT-545C

. . . continued from previous page

PORT ADDRESS CONFIGURATION			
Port Address	SW1/1	SW1/2	SW1/3
í 330	On	On	On
130	On	On	Off
134	Off	On	Off
230	On	Off	On
234	Off	Off	On
334	Off	On	On
N/A	N/A	Off	Off

BIOS ADDRESS CONFIGURATION			
BIOS Address	SW1/5	SW1/6	SW1/7
í DC000	On	On	On
CC000	On	On	Off
C8000	Off	On	Off
D0000	Off	Off	On
D4000	On	Off	On
D8000	Off	On	On
Disabled	N/A	Off	Off