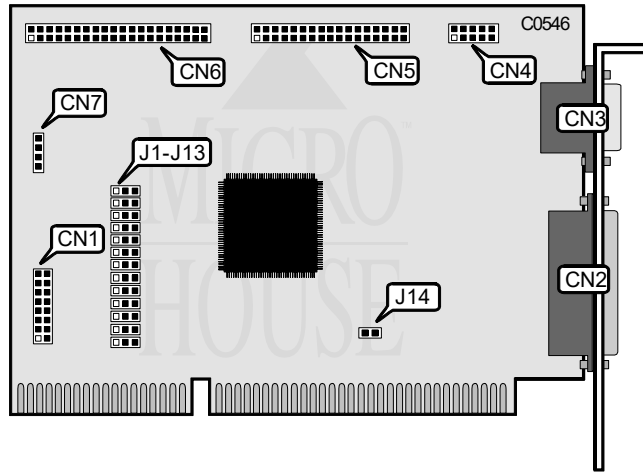


UNIDENTIFIED DLU 270

Q3/94

Data bus: 16-bit, ISA
 Size: Half-length, Full-height card
 Hard drive supported: Two IDE (AT) Interface drives
 Floppy drives supported: 360KB, 720KB, 1.2MB, 1.44MB



CONNECTIONS	
Function	Location
15-pin connector - game port	CN1
25-pin parallel port - external	CN2
9-pin serial port - external	CN3
9-pin serial port - internal	CN4
34-pin control cable connector - floppy drive	CN5
40-pin IDE(AT) interface connector	CN6
4-pin connector - drive active LED	CN7
2-pin connector - optional IOCHRDY for IDE	J14

USER CONFIGURABLE SETTINGS		
Function	Location	Setting
if No other hard drive interface exists	J1	pins 2 & 3 closed
Two or more hard drive interfaces exist	J1	pins 1 & 2 closed
if Game port enabled	J2	pins 1 & 2 closed
Game port disabled	J2	pins 2 & 3 closed

Continued on next page. . .

UNIDENTIFIED

DLU 270

... continued from previous page

USER CONFIGURABLE SETTINGS(CONTINUED)		
Function	Location	Setting
í Floppy drive interface address 3F1 - 3F7h select	J3	pins 1 & 2 closed
Floppy drive interface address 371 - 377h select	J3	pins 2 & 3 closed
í Floppy drive interface enabled	J4	pins 1 & 2 closed
Floppy drive interface disabled	J4	pins 2 & 3 closed
í IDE interface address 1F0 - 1F7h	J5	pins 1 & 2 closed
IDE interface address 170 - 177h	J5	pins 2 & 3 closed
í IDE interface enabled	J6	pins 1 & 2 closed
IDE interface disabled	J6	pins 2 & 3 closed
í IDE type AT enabled	J7	pins 2 & 3 closed
IDE type XT enabled	J7	pins 1 & 2 closed
í Serial port 1 address 3F8h select	J8	pins 1 & 2 closed
Serial port 1 address 3E8h select	J8	pins 2 & 3 closed
í Serial port 1 enabled	J9	pins 1 & 2 closed
Serial port 1 disabled	J9	pins 2 & 3 closed
í Serial port 2 enabled	J10	pins 1 & 2 closed
Serial port 2 disabled	J10	pins 2 & 3 closed
í Serial port 2 address 2F8h select	J11	pins 1 & 2 closed
Serial port 2 address 2E8h select	J11	pins 2 & 3 closed
í Parallel port enabled	J12	pins 1 & 2 closed
Parallel port disabled	J12	pins 2 & 3 closed
í Parallel port address 378h select	J13	pins 1 & 2 closed
Parallel port address 278h select	J13	pins 2 & 3 closed