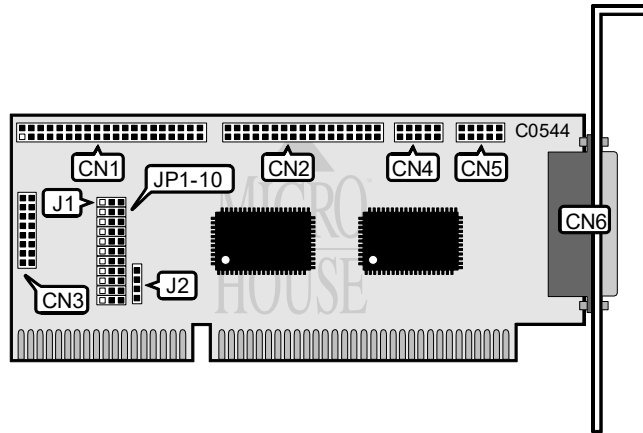


PC WARE INTERNATIONAL, INC. SUPER I/O

Q3/94

Data bus: 16-bit, ISA
 Size: Half-length, half-height card
 Hard drive supported: Two IDE (AT) Interface drives
 Floppy drives supported: 360KB, 720KB, 1.2MB, 1.44MB



CONNECTIONS	
Function	Location
40-pin AT Interface (IDE) connector	CN1
34-pin control cable connector - floppy drive	CN2
Game port	CN3
10-pin serial port 1 (COM1/COM3)	CN4
10-pin serial port 2 (COM2/COM4)	CN5
25-pin parallel port	CN6
HDD LED connector	J2

USER CONFIGURABLE SETTINGS		
Function	Location	Setting
IDE I/O channel ready enabled	J1	pins 1 & 2 closed
IDE I/O channel ready disabled	J1	Open
Game port (CN3) enabled	JP3	pins 1 & 2 closed
Game port (CN3) disabled	JP3	pins 2 & 3 closed
Floppy drive (CN2) enabled	JP7	pins 1 & 2 closed
Floppy drive (CN2) disabled	JP7	pins 2 & 3 closed
HDC exists	JP8	pins 1 & 2 closed
HDC does not exist	JP8	pins 2 & 3 closed

Continued on next page. . .

PC WARE INTERNATIONAL, INC.

SUPER I/O

...continued from previous page

USER CONFIGURABLE SETTINGS		
Function	Location	Setting
í IDE (CN1) enabled	JP9	pins 1 & 2 closed
IDE (CN1) disabled	JP9	pins 2 & 3 closed

SERIAL PORT 1 (CN4) CONFIGURATION		
Function	JP4	JP6
í COM1	pins 1 & 2 closed	pins 1 & 2 closed
COM3	pins 2 & 3 closed	pins 1 & 2 closed
Disabled	N/A	pins 2 & 3 closed

SERIAL PORT 2 (CN5) CONFIGURATION		
Function	JP1	JP2
í COM2	pins 1 & 2 closed	pins 1 & 2 closed
COM4	pins 2 & 3 closed	pins 1 & 2 closed
Disabled	N/A	pins 2 & 3 closed

PARALLEL PORT (CN6) CONFIGURATION		
Function	JP5	JP10
í LPT2	pins 1 & 2 closed	pins 1 & 2 closed
LPT3	pins 2 & 3 closed	pins 1 & 2 closed
Disabled	N/A	pins 2 & 3 closed