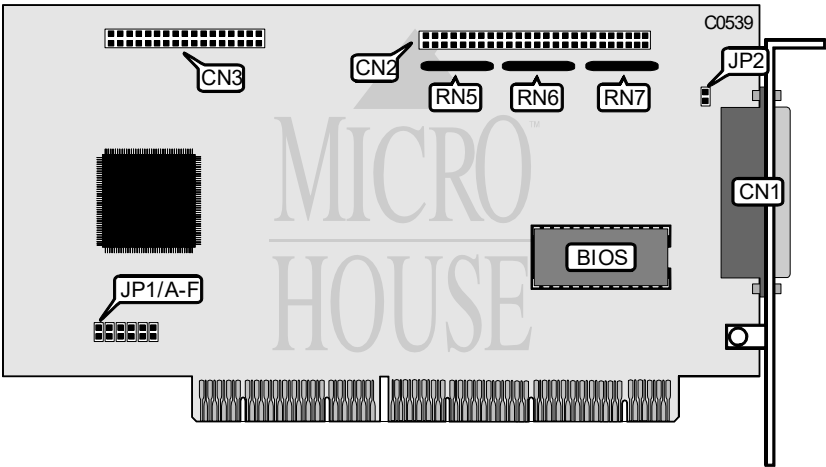


ADAPTEC, INC.
AHA-1740/AHA-1742A (VER. 2)

Q3/94

Data bus: 32-bit EISA
Size: Three-quarter length, Full-height card
Hard drive supported: Up to fourteen SCSI devices
Floppy drives supported: 360KB, 720KB, 1.2MB, 1.44MB



CONNECTIONS	
Function	Location
50-pin SCSI interface - external	CN1
50-pin SCSI interface - internal	CN2
34-pin control cable connector - floppy drive	CN3
Terminating resistor 1	RN5
Terminating resistor 2	RN6
Terminating resistor 3	RN7

USER CONFIGURABLE SETTINGS		
Function	Location	Setting
í Factory configured - do not alter	JP1/A	N/A
í Factory configured - do not alter	JP1/B	N/A
í Factory configured - do not alter	JP1/C	N/A
í Factory configured - do not alter	JP1/D	N/A
í Floppy drive primary address select	JP1/E	open
Floppy drive alternate address select	JP1/E	closed
í Floppy drive interface enabled	JP1/F	closed
Floppy drive interface disabled	JP1/F	open
í TERMPWR supplied by host interface	JP2	closed
TERMPWR not supplied by host interface	JP2	open