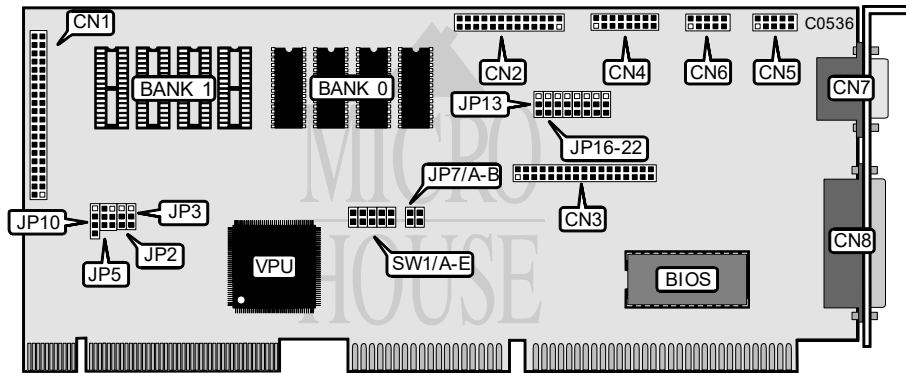


## PROLINK COMPUTER, INC. MVGA-WDC33+

Q3/94

Data bus: 32-bit VESA  
 Size: Full-length, Full-height card  
 Hard drive supported: Two IDE(AT) interface drives  
 Floppy drives supported: 360KB, 720KB, 1.2MB, 1.44MB



CONNECTIONS	
Function	Location
40-pin IDE(AT) interface connector	CN1
VESA feature connector	CN2
34-pin control cable connector - floppy drive	CN3
15-pin game port - internal	CN4
9-pin serial port 1 - internal	CN5
9-pin serial port 2 - internal	CN6
15-pin analog video port	CN7
25-pin parallel port - external	CN8
4-pin connector - drive active LED	JP10

USER CONFIGURABLE SETTINGS		
Function	Location	Setting
if Data/Command line disabled	JP2	pins 1 & 2 closed
Data/Command line enabled	JP2	pins 2 & 3 closed
if CPU type 80486 select	JP3	pins 2 & 3 closed
CPU type 80386 select	JP3	pins 1 & 2 closed
if IDE interface speed 2 select	JP5	pins 2 & 3, 4 & 5 closed
IDE interface speed 0 select	JP5	pins 1 & 2, 4 & 5 closed
IDE interface speed 4 select	JP5	pins 1 & 2, 5 & 6 closed
IDE interface speed 5 select	JP5	pins 2 & 3, 5 & 6 closed

Continued on next page. . .

**PROLINK COMPUTER, INC.**  
**MVGA-WDC33+**

...continued from previous page

USER CONFIGURABLE SETTINGS(CONTINUED)		
Function	Location	Setting
í Mode 3, 12, 5E, & 5F 72Hz refresh select	JP7/A	closed
Mode 3, 12, 5E, & 5F 60Hz refresh select	JP7/A	open
í Zero wait state disabled	JP7/B	open
Zero wait state enabled	JP7/B	closed
í Standard font enabled	SW1/E	open
TUV font enabled	SW1/E	closed
í Floppy drive interface enabled	JP16	pins 1 & 2 closed
Floppy drive interface disabled	JP16	pins 2 & 3 closed
í Game port enabled	JP18	pins 1 & 2 closed
Game port disabled	JP18	pins 2 & 3 closed

PRIMARY SERIAL PORT CONFIGURATION		
Port (CN5)	JP19	JP20
í COM1	pins 1 & 2 closed	pins 1 & 2 closed
COM3	pins 1 & 2 closed	pins 2 & 3 closed
Disabled	pins 2 & 3 closed	N/A

ALTERNATE SERIAL PORT CONFIGURATION		
Port 2 (CN6)	JP21	JP22
í COM2	pins 1 & 2 closed	pins 1 & 2 closed
COM4	pins 1 & 2 closed	pins 2 & 3 closed
Disabled	pins 2 & 3 closed	N/A

DRAM CONFIGURATION		
Size	Bank 0	Bank 1
í 1MB	(4)256K x 8	NONE
2MB	(4)256K x 8	(4)256K x 8

800 x 600 REFRESH RATES		
Refresh	SW1/A	SW1/B
í 56Hz Non-interlaced	open	open
60Hz Non-interlaced	open	closed
72Hz Non-interlaced	closed	open
56Hz Non-interlaced	closed	closed

Continued on next page. . .

PROLINK COMPUTER, INC.  
MVGA-WDC33+

...continued from previous page

1024 x 768 REFRESH RATES		
Refresh	SW1/C	SW1/D
í 87Hz Interlaced	open	open
60Hz Non-interlaced	open	closed
70Hz Non-interlaced	closed	open
72Hz Non-interlaced	closed	closed

PARALLEL PORT CONFIGURATION		
LPT	JP13	JP17
í 2	pins 1 & 2 closed	pins 1 & 2 closed
3	pins 1 & 2 closed	pins 2 & 3 closed
Disabled	pin s2 & 3 closed	N/A