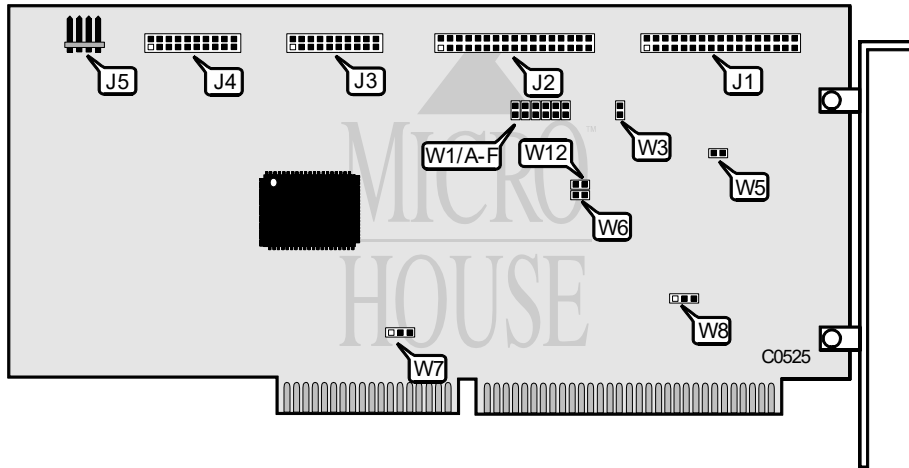


**CMS ENHANCEMENTS, INC.**  
**HCWD7VSE1/2**

Q3/94

Data bus: 16-bit ISA  
 Size: Three-quarter length, half-height card  
 Hard drive supported: Two ESDI ST506/412 drives  
 Floppy drives supported: 360KB, 720KB, 1.2MB, 1.44MB



CONNECTIONS	
Function	Location
34-pin control cable connector - floppy drive	J1
34-pin control cable connector - hard drive	J2
20-pin data cable connector - drive 0	J3
20-pin data cable connector - drive 1	J4
4-pin connector - drive active LED	J5

USER CONFIGURABLE SETTINGS		
Function	Location	Setting
í Caching enabled	W1/A	open
Caching disabled	W1/A	closed
í Four byte ECC mode enabled	W1/B	open
Seven byte ECC mode enabled	W1/B	closed
í Disk address translation enabled	W1/C	open
Disk address translation disabled	W1/C	closed

*Continued on next page. . .*

CMS ENHANCEMENTS, INC.  
HCWD7VSE1/2

...continued from previous page

USER CONFIGURABLE SETTINGS(CONTINUED)		
Function	Location	Setting
í Factory configured - do not alter	W1/D	open
í Sectors per track determined by drive jumpers	W1/E	open
Sectors per track not determined by drive jumpers	W1/E	closed
í Alternate hard drive sectors disabled	W1/F	open
Alternate hard drive sectors enabled	W1/F	closed
í BIOS enabled	W3	open
BIOS disabled	W3	closed
í Single speed floppy drive interface enabled	W5	open
Dual speed floppy drive interface enabled	W5	closed
í Floppy drive address 3F2h select	W6	open
Floppy drive address 372h select	W6	closed
í Interrupt IRQ14 enabled	W7	pins 1 & 2 closed
Interrupt IRQ15 enabled	W7	pins 2 & 3 closed
í Base memory address is CC000h	W8	pins 2 & 3 closed
Base memory address is C8000h	W8	pins 1 & 2 closed
í Hard drive address is 1F0h	W12	open
Hard drive address is 170h	W12	closed