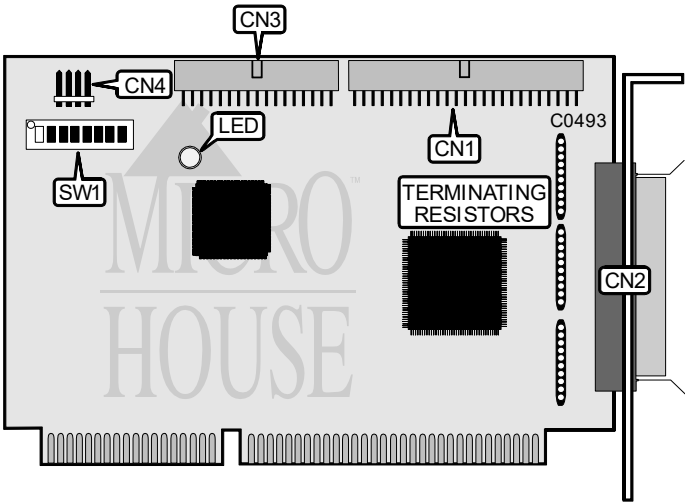


ADAPTEC, INC.
AHA-1542CF, AHA-1540CP, AHA-1542CF, AHA-1542CP

Q3/95

Data bus: 16-bit, ISA
Size: Half-length, full-height card
Hard drive supported: Up to seven SCSI drives
Floppy drives supported: Two 360KB, 720KB, 1.2MB, or 1.44MB drives



CONNECTIONS	
Function	Location
50-pin SCSI connector - internal	CN1
50-pin SCSI connector - external	CN2
34-pin control cable connector - floppy drive	CN3
4-pin connector - drive active LED	CN4

USER CONFIGURABLE SETTINGS		
Function	Location	Setting
i SCSI Termination set through software	SW1/1	off
SCSI Termination enabled	SW1/1	on
i Floppy drive enabled	SW1/5	off
Floppy drive disabled	SW1/5	on

Continued on next page . . .

ADAPTEC, INC.

AHA-1542CF, AHA-1540CP, AHA-1542CF, AHA-1542CP

... continued from previous page

I/O PORT ADDRESS SELECTION			
Address	SW1/2	SW1/3	SW1/4
330-333h	off	off	off
334-337h	on	off	off
230-233h	off	on	off
234-237h	on	on	off
130-133h	off	off	on
134-137h	on	off	on
Reserved	off	on	on
Reserved	on	on	on

BIOS ADDRESS SELECTION			
Address	SW1/6	SW1/7	SW1/8
DC000h	off	off	off
D8000h	on	off	off
D4000h	off	on	off
D0000h	on	on	off
CC000h	off	off	on
C8000h	on	off	on
Reserved	off	on	on
Disabled	on	on	on