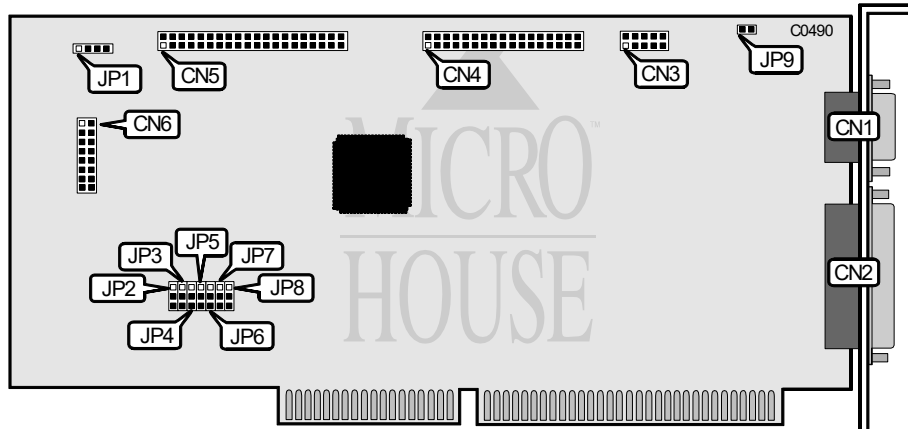


EVEREX SYSTEMS, INC.
EV-365

Data Bus: 16-bit ISA
Size: Full-length, Full-height card
Hard drives supported: IDE (AT) drives
Floppy drives supported: Two 360KB, 720KB, 1.2MB, or 1.44MB drives



CONNECTIONS	
Function	Location
10-pin serial port (COM1/3) - internal	CN1
25-pin parallel port (LPT2/3) external	CN2
10-pin serial port (COM2/4) - internal	CN3
34-pin control cable connector - floppy drive	CN4
40-pin IDE (AT) Interface connector	CN5
15-pin game port - internal	CN6
2-pin connector - Drive active LED	JP1
Optional IOCHRDY for IDE interface	JP9

Continued on next page. . .

EVEREX SYSTEMS, INC.
EV-365

...continued from previous page

USER CONFIGURABLE SETTINGS		
Function	Location	Setting
í Serial port 1 enabled	JP2	Pins 1 & 2 closed
Serial port 1 disabled	JP2	Pins 2 & 3 closed
í Game port enabled	JP3	Pins 1 & 2 closed
Game port disabled	JP3	Pins 2 & 3 closed
í Floppy drive enabled	JP4	Pins 1 & 2 closed
Floppy drive disabled	JP4	Pins 2 & 3 closed
í Printer port is set to LPT2	JP5	Pins 1 & 2 closed
Printer port is set to LPT3	JP5	Pins 2 & 3 closed
í IDE interface enabled	JP6	Pins 1 & 2 closed
IDE interface disabled	JP6	Pins 2 & 3 closed
í Serial port 2 enabled	JP7	Pins 1 & 2 closed
Serial port 2 disabled	JP7	Pins 2 & 3 closed
í Primary Hard Disk Controller enabled	JP8	Pins 1 & 2 closed
Primary Hard Disk Controller disabled	JP8	Pins 2 & 3 closed