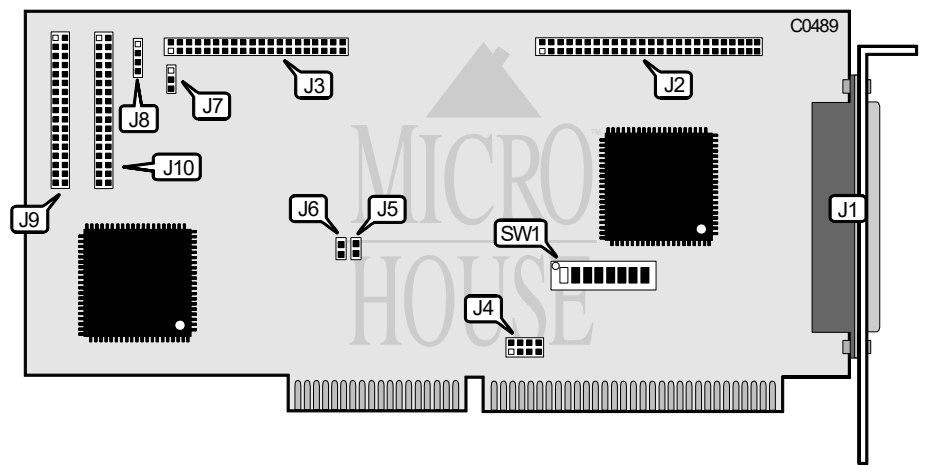


CONTROL CONCEPTS, INC.
16-BIT COMBINATION SCSI, IDE, AND FLOPPY HOST BUS
ADAPTER AND CONTROLLER

Q3/94

Data bus: 16-bit ISA
Size: Full-length card
Hard drive supported: One IDE drive, up to seven SCSI drives
Floppy drives supported: 320KB, 360KB, 720KB, 1.2MB, 1.44MB



CONNECTIONS	
Function	Location
External SCSI interface	J1
Internal SCSI interface	J2
IDE interface	J3
IDE interface LED	J8
Floppy drive interface 1	J9
Floppy drive interface 2	J10

USER CONFIGURABLE SETTINGS		
Function	Location	Setting
í Factory configured - do not alter	J4	N/A
í IDE interface enabled	J5	Open
IDE interface disabled	J5	Closed
í Floppy drive interface enabled	J6	Open
Floppy drive interface disabled	J6	Closed
í Factory configured - do not alter	J7	N/A
í Control Concepts compatibility mode enabled	SW1/8	Open
Standard compatibility mode enabled	SW1/8	Closed

Continued on next page. . .

CONTROL CONCEPTS, INC. 16-BIT COMBINATION SCSI, IDE, AND FLOPPY HOST BUS ADAPTER AND CONTROLLER

...continued from previous page

SCSI BOARD ADDRESS SELECT				
Starting Address	Ending Address	SW1/1	SW1/2	SW1/3
CC000h	CFFFFh	Off	Off	Off
D0000h	D3FFFh	On	Off	Off
D4000h	D7FFFh	Off	On	Off
D8000h	DBFFFh	On	On	Off
DC000h	DFFFFh	Off	Off	On
C4000h	C7FFFh	On	Off	On
C8000h	CBFFFh	Off	On	On
Disabled	Disabled	On	On	On

I/O ADDRESS SELECT	
Address	SW1/4
1E0h - 1EFh	Off
3E0h - 3EFh	On

SCSI ID SELECT			
Number	SW1/5	SW1/6	SW1/7
0	On	On	On
1	Off	On	On
2	On	Off	On
3	Off	Off	On
4	On	On	Off
5	Off	On	Off
6	On	Off	Off
7	Off	Off	Off