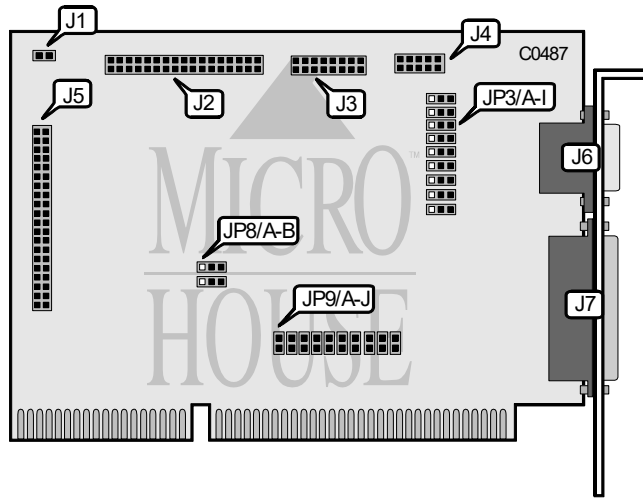


DIAMOND FLOWER, INC. MIO-400EF

Q3/94

Data bus: 16-bit ISA
 Size: Half-length, full-height card
 Hard drive supported: IDE (AT)
 Floppy drives supported: Two 360KB, 720KB, 1.2MB, or 1.44MB drives



CONNECTIONS	
Function	Location
IDE interface LED	J1
Floppy drive interface	J2
Game port	J3
Serial port 2	J4
IDE interface	J5
Serial port 1	J6
Parallel port	J7

USER CONFIGURABLE SETTINGS		
Function	Location	Setting
IDE interface enabled	JP3/H	Pins 2 & 3 closed
IDE interface disabled	JP3/H	Pins 1 & 2 closed
Game port enabled	JP3/I	Pins 2 & 3 closed
Game port disabled	JP3/I	Pins 1 & 2 closed

Continued on next page. . .

DIAMOND FLOWER, INC.

MIO-400EF

...continued from previous page

SERIAL PORT CONFIGURATION						
Port 1 (J6)	Port 2 (J4)	JP3/C	JP3/D	JP3/E	JP8/A	JP8/B
í COM1	í COM2	Pins 2 & 3	Pins 2 & 3	Pins 2 & 3	Pins 2 & 3	Pins 2 & 3
COM2	COM3	Pins 2 & 3	Pins 2 & 3	Pins 1 & 2	Pins 1 & 2	Pins 1 & 2
COM1	COM4	Pins 2 & 3	Pins 2 & 3	Pins 2 & 3	Pins 2 & 3	Pins 1 & 2
COM3	COM4	Pins 2 & 3	Pins 2 & 3	Pins 2 & 3	Pins 1 & 2	Pins 2 & 3
COM1	Disabled	Pins 2 & 3	Pins 1 & 2	Pins 2 & 3	Pins 2 & 3	Pins 2 & 3
Disabled	COM2	Pins 1 & 2	Pins 2 & 3	Pins 2 & 3	Pins 2 & 3	Pins 2 & 3
Disabled	Disabled	Pins 1 & 2	Pins 1 & 2	Pins 1 & 2	Pins 2 & 3	Pins 2 & 3
Note: All pins designated should be placed in the closed position.						

PRIMARY SERIAL PORT INTERRUPT SELECT				
IRQ	JP9/E	JP9/F	JP9/G	JP9/H
í IRQ4	Open	Open	Closed	Open
IRQ2	Closed	Open	Open	Open
IRQ3	Open	Open	Open	Closed
IRQ5	Open	Closed	Open	Open

SECOND SERIAL PORT INTERRUPT SELECT				
IRQ	JP9/A	JP9/B	JP9/C	JP9/D
í IRQ3	Open	Open	Open	Closed
IRQ2	Closed	Open	Open	Open
IRQ4	Open	Open	Closed	Open
IRQ5	Open	Closed	Open	Open

PARALLEL PORT CONFIGURATION		
LPT	JP3/A	JP3/B
í 1	Pins 1 & 2 closed	Pins 2 & 3 closed
2	Pins 2 & 3 closed	Pins 2 & 3 closed
3	Pins 2 & 3 closed	Pins 1 & 2 closed
Disabled	Pins 1 & 2 closed	Pins 1 & 2 closed

PARALLEL PORT INTERRUPT SELECT		
IRQ	JP9/I	JP9/J
í IRQ7	Open	Closed
IRQ5	Closed	Open

FLOPPY DRIVE CONFIGURATION		
Setting	JP3/F	JP3/G
í Enabled	Pins 2 & 3 closed	Pins 2 & 3 closed
Disabled	Pins 1 & 2 closed	Pins 2 & 3 closed