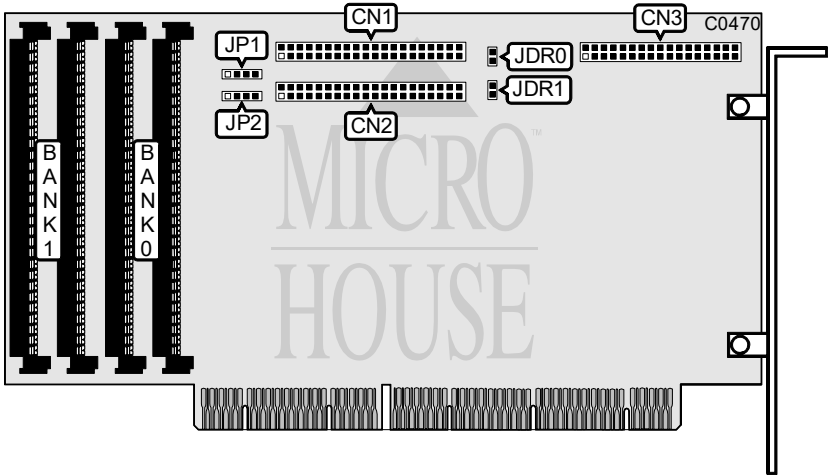


TEKRAM TECHNOLOGY CO., LTD.
DC-620B

Q2/94

Data bus: 32-bit, EISA
Size: Three/quarter-length, full-height card
Hard drive supported: Four IDE (AT) Interface drives
Floppy drives supported: Two 360KB, 720KB, 1.2MB, or 1.44MB drives



CONNECTIONS		
Function		Location
40-pin IDE (AT) Interface connector - IDE-0		CN1
40-pin IDE (AT) Interface connector - IDE-1		CN2
34-pin control cable connector - floppy drive		CN3
4-pin connector - drive active LED		JP1
4-pin connector - cache error speaker		JP2

USER CONFIGURABLE SETTINGS			
Function		Location	Setting
i	IDE-0 damping resistor enabled	JDR0	open
	IDE-0 damping resistor disabled	JDR0	closed
i	IDE-1 damping resistor enabled	JDR1	open
	IDE-1 damping resistor disabled	JDR1	closed

Continued on next page . . .

TEKRAM TECHNOLOGY CO., LTD.

DC-620B

... continued from previous page

DRIVE ACTIVE LED ERROR CODES (IMMEDIATELY AFTER POWER-UP)	
Status	Function
One short flash	No cache DRAM installed
Two short flashes	CPU error
Three short flashes	SRAM error
Four short flashes	Timer error

MISCELLANEOUS TECHNICAL NOTES
Some versions of this board have two 512KB x 8 DRAM chips mounted in place of Bank 0. In such a case the board will work without additional memory. In all other cases a pair of 256KB, 1MB, or 4MB SIMM modules must be installed in Bank 0 for the board to function.