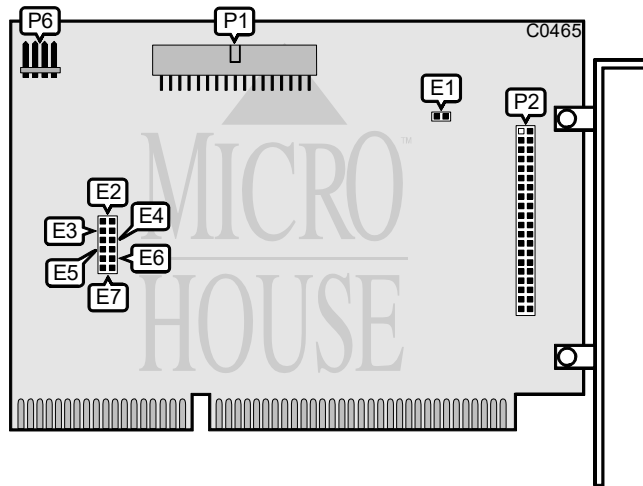


SILICON VALLEY COMPUTER, INC.

ADP20F

Q2/94

Data bus: 16-bit, ISA
 Size: Half-length, full-height card
 Hard drive supported: Two IDE (AT) Interface drives
 Floppy drives supported: Two 360KB, 720KB, 1.2MB, or 1.44MB drives



CONNECTIONS		
Function	Location	
34-pin control cable connector-floppy drive	P1	
40-pin AT Interface (IDE) connector	P2	
4-pin connector-Drive active LED	P6	

USER CONFIGURABLE SETTINGS			
Function	Location		Setting
f Floppy drive enabled	E1, E6, E7		closed
Floppy drive disabled	E1, E6, E7		open
f Floppy drive change signal enabled	E2		closed
Floppy drive change signal disabled	E2		open
f Floppy drive precompensation is 125ns	E3		open
Floppy drive precompensation is 187ns	E3		closed
f Single speed floppy drives supported	E4		open
Dual speed floppy drives supported	E4		closed
f Older Conner hard drives not supported	E5		open
Older Conner hard drives supported	E5		closed