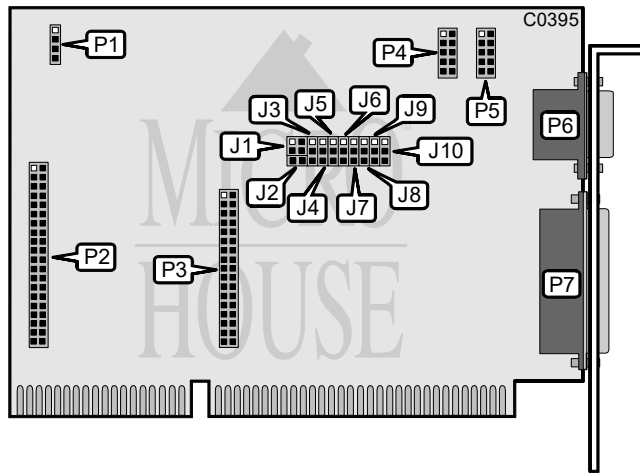


## EVERGREEN SYSTEMS, INC.

### IDE-I/O

Q1/94

Data bus: 16-bit, ISA  
 Size: Half-length, full-height card  
 Hard drive supported: Two IDE (AT) Interface drives  
 Floppy drives supported: Two 360KB, 720KB, 1.2MB, or 1.44MB drives



CONNECTIONS	
Function	Location
4-pin connector - Drive active LED	P1
40-pin IDE(AT) Interface connector	P2
34-pin control cable connector - floppy drive	P3
10-pin serial port 1 (COM1/2) - internal	P4
10-pin serial port 2 (COM1/2) - internal	P5
15-pin game port - external	P6
25-pin parallel port (LPT1/2) - external	P7

USER CONFIGURABLE SETTINGS		
Function	Location	Setting
i Floppy drive enabled	J3	pins 1 & 2 closed
Floppy drive disabled	J3	pins 2 & 3 closed
i Game Port (P6) enabled	J2	open
Game Port (P6) disabled	J2	closed
i Hard drive enabled	J1	open
Hard drive disabled	J1	closed

Continued on next page . . .

# EVERGREEN SYSTEMS, INC.

## IDE-I/O

... continued from previous page

SERIAL PORT CONFIGURATION				
Port 1 (P4)	Port 2 (P5)	J7	J8	J9
COM1	COM2	Pins 1 & 2 closed	Pins 1 & 2 closed	Pins 1 & 2 closed
COM2	COM1	Pins 1 & 2 closed	Pins 1 & 2 closed	Pins 2 & 3 closed
COM1	Disabled	Pins 1 & 2 closed	Pins 2 & 3 closed	Pins 1 & 2 closed
COM2	Disabled	Pins 1 & 2 closed	Pins 2 & 3 closed	Pins 2 & 3 closed
Disabled	COM1	Pins 2 & 3 closed	Pins 1 & 2 closed	Pins 2 & 3 closed
Disabled	COM2	Pins 2 & 3 closed	Pins 1 & 2 closed	Pins 1 & 2 closed
Disabled	Disabled	Pins 2 & 3 closed	Pins 2 & 3 closed	Pins 2 & 3 closed

PARALLEL PORT (P7) SETTINGS			
LPT	IRQ	JP5	JP6
1	IRQ7	Pins 1 & 2 closed	Pins 1 & 2 closed
0	IRQ7	Pins 1 & 2 closed	Pins 2 & 3 closed
2	IRQ5	Pins 2 & 3 closed	Pins 1 & 2 closed
Disabled	N/A	Pins 2 & 3 closed	Pins 2 & 3 closed

MISCELLANEOUS TECHNICAL NOTES
Jumpers J4 and J10 are factory configured to J4 - pins 2 & 3 closed; J10 - pins 1 & 2 closed - do not alter.