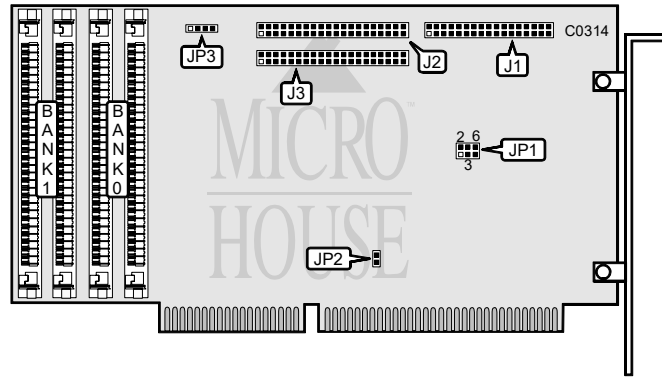


PROMISE TECHNOLOGY, INC.

DC200

Q2/93

Data bus: 16-bit, ISA
 Size: Three/quarter-length, full-height card
 Hard drive supported: Two IDE (AT) interface drives
 Floppy drives supported: Two 360KB, 720KB, 1.2MB, or 1.44MB drives



CONNECTIONS	
Purpose	Location
Floppy drive interface	J1
IDE drive interface (Primary)	J2
IDE drive interface (Secondary)	J3
Hard Drive activity LED	JP3

USER CONFIGURABLE SETTINGS		
Function	Location	Setting
Floppy drive interface is enabled	JP2	closed
Floppy drive interface disabled	JP2	open
IDE(AT) interrupt is IRQ12	JP1	pins 1 & 2 closed
IDE(AT) interrupt is IRQ14	JP1	pins 3 & 4 closed
IDE(AT) interrupt is IRQ 15	JP1	pins 5 & 6 closed

DRAM CONFIGURATION		
Size	Bank 0	Bank 1
512KB	(2) 256K x 9	NONE
1MB	(2) 256K x 9	(2) 256K x 9
2MB	(2) 1MB x 9	NONE
4MB	(2) 1MB x 9	(2) 1MB x 9
8MB	(2) 4MB x 9	NONE
16MB	(2) 4MB x 9	(2) 4MB x 9

Note: 8 or 9 bit SIMMS may be used.