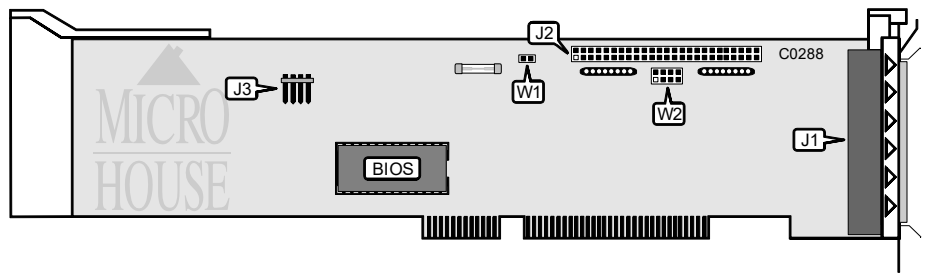


FUTURE DOMAIN CORPORATION
MCS-700

Q3/92

Data bus: 16-bit, MCA
Size: Full-length card
Hard drives supported: Up to six SCSI devices
Floppy drives supported: None
Sector interleave: 1:1



CONNECTIONS	
50-pin SCSI connector-external	J1
50-pin SCSI connector-internal	J2
4-pin connector-DC power (Solder Mount version only)	J3

USER CONFIGURABLE SETTINGS		
Function	Location	Setting
Termination power supplied to bus	W1	closed
Termination power not supplied to bus	W1	open
Termination enabled	W2/jumpers 1-4	closed
Termination disabled	W2/jumpers 1-4	open

MISCELLANEOUS TECHNICAL NOTES	
All configurations are done through the firmware. JP2 is not present on the Surface Mount version	

