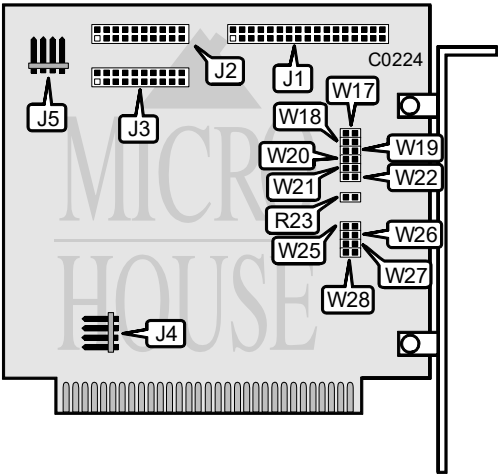


WESTERN DIGITAL CORPORATION
WD1004A-WX1

Data bus:	8-bit, PC/AT, PC/AT
Size:	Half-length, full-height card
Hard drives supported:	Two MFM ST506/412 drives
Floppy drives supported:	None
Maximum heads/cyl.:	16 heads and 1024 cylinders



USERS CONFIGURABLE SETTINGS		
Function	Location	Setting
Hard drive Interrupt request is IRQ5	W27	closed
Hard drive Interrupt request is IRQ2	W27	open

CONNECTIONS	
Function	Location
34-pin control cable connector-hard drive	J1
20-pin data cable connector-drive 0	J2
20-pin data cable connector-drive 1	J3
5-pin connector-DC power	J4
4-pin connector-drive active LED	J5

Continued on next page . . .

WESTERN DIGITAL CORPORATION

WD1004A-WX1

... continued from previous page

BIOS DRIVE TYPE TABLE - (WD1004-27X only)							
Table #	W17	W18	W19	W20	Cap.	Hds.	Cyls.
0	closed	closed	closed	closed	21MB	4	612
1	open	closed	open	closed	10MB	4	306
2	closed	open	closed	open	10MB	2	615
3	open	open	open	open	21MB	4	615

I/O PORT & BIOS ADDRESS			
I/O Port Address	BIOS Address	W21	W22
320-323h	C8000-C9FFFh	open	open
324-327h	CA000-CBFFFh	closed	open
328-32Bh	CC000-CDFFFh	open	closed
32C-32Fh	CE000-CFFFFh	closed	closed

MISCELLANEOUS TECHNICAL NOTES	
<p>This controller has a built-in low-level format program. To enter the program run the DEBUG utility supplied with DOS and at the prompt enter: G=C800:5.</p> <p>If the system is not compatible with the Western Digital BIOS, a resistor must be installed at R23 to disable the WD BIOS</p>	