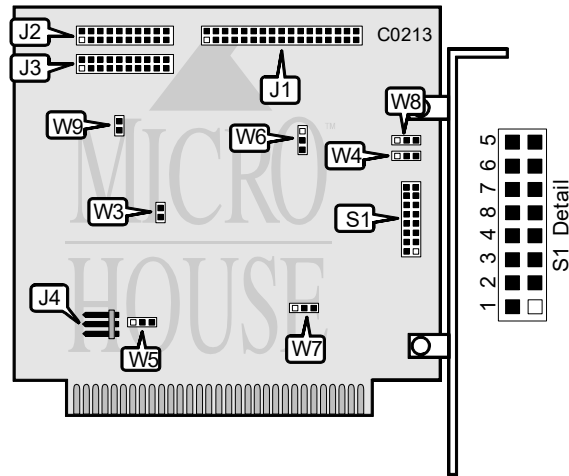


WESTERN DIGITAL CORPORATION

WD1002-27X

Replaced by the WD1004-27X

Data bus: 8-bit, PC/XT
 Size: Half-length, full-height card
 Hard drives supported: Two RLL ST506/412 drives
 Floppy drives supported: None
 Maximum heads/cyl.: 16 heads and 1024 cylinders



CONNECTIONS	
Function	Location
34-pin control cable connector-hard drive	J1
20-pin data cable connector-drive 0	J2
20-pin data cable connector-drive 1	J3
5-pin DC power connector	J4

DRIVE TYPE CONFIGURATION				
		DRIVE 1		DRIVE 0
Type #	S1/jumper 1	S1/jumper 2	S1/jumper 3	S1/jumper 4
0	closed	closed	closed	closed
1	open	closed	open	closed
2	closed	open	closed	open
3	open	open	open	open

Continued on next page . . .

WESTERN DIGITAL CORPORATION

WD1002-27X

... continued from previous page

USER CONFIGURABLE SETTINGS		
Function	Location	Setting
í BIOS enabled	W3	closed
BIOS disabled	W3	open
í I/O port address is 324-327h	W4	pins 1 & 2 closed
I/O port address is 320-323h	W4	pins 2 & 3 closed
í 2732 & 2764 BIOS supported (hard-wired)	W5	pins 1 & 2 closed
2716 BIOS supported	W5	pins 2 & 3 closed
í 8 head hard drive with RWC supported	W6	pins 2 & 3 closed
16 head hard drive supported	W6	pins 1 & 2 closed
í Hard Drive Interrupt is IRQ5 (hard-wired)	W7	pins 1 & 2 closed
Hard Drive Interrupt is IRQ2	W7	pins 2 & 3 closed
í Single controller setting, primary controller	W8	pins 2 & 3 closed
Dual controller setting, secondary controller	W8	pins 1 & 2 closed
í Firmware translation enabled	W9	closed
Firmware translation disabled	W9	open
í Hard Drive Interrupt is IRQ5	S1/jumper 7	open
Hard Drive Interrupt is IRQ2	S1/jumper 7	closed
í AT mode enabled	S1/jumper 8	closed
XT mode enabled	S1/jumper 8	open

BIOS DRIVE TYPE TABLE			
Type #	Formatted Capacity	Heads	Physical/Logical Cylinders
0	65MB	5	981/1023
1	92MB	7	987/1023
2	33MB	4	612/935
3	33MB	4	615/940

TRANSLATION CONFIGURATION - S1 & W9						
SPT	BIOS Translate	Dynamic Configuration	RLL BIOS Type	S1 Jumper 5	S1 Jumper 6	W9 see above
-	Undefined	-	-	open	open	-
17	yes	no	1	closed	open	open
26	no	yes	2	open	closed	open
17	no	yes	0	closed	closed	closed

MISCELLANEOUS TECHNICAL NOTES	
This controller has a built-in low-level format program. To enter the program run the DEBUG utility supplied with DOS and at the prompt enter: G=C800:5.	