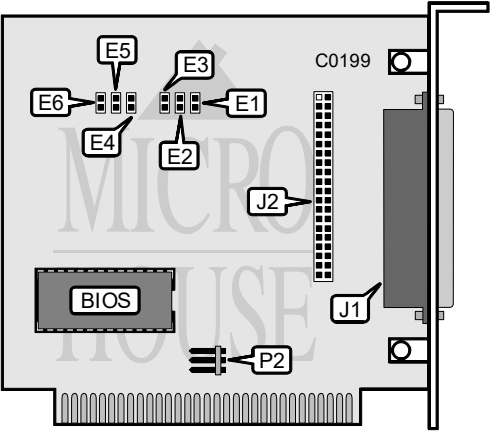


SILICON VALLEY COMPUTER, INC.
ADP50-3, GOLD CARD40-T8

Q4/92

Data bus: 8-bit, ISA
Size: Half-length, full-height card
Hard drives supported: Two IDE (XT/AT) Interface drives
Floppy drives supported: Two 360KB or 720KB drives (external only)



CONNECTIONS	
Function	Location
DB-37 control cable connector-floppy drive	J1
40-pin IDE (XT/AT) Interface connector	J2
5-pin connector-DC power	P2

BIOS ADDRESS			
Select	E1	E2	E3
Disabled	open	open	open
í C800h	open	open	closed
CA00h	open	closed	closed
CC00h	closed	open	closed
CE00h	closed	closed	closed

Continued on next page . . .

SILICON VALLEY COMPUTER, INC.
ADP50-3, GOLD CARD40-T8

. . . continued from previous page

INTERRUPT REQUEST			
Function	E4	E5	E6
í Disabled	open	open	open
IRQ5	closed	open	closed
IRQ2	closed	closed	open

MISCELLANEOUS TECHNICAL NOTES
This controller has a built-in low level format program. To enter the program run the DEBUG utility supplied with DOS and at the prompt enter: G=C800:6.