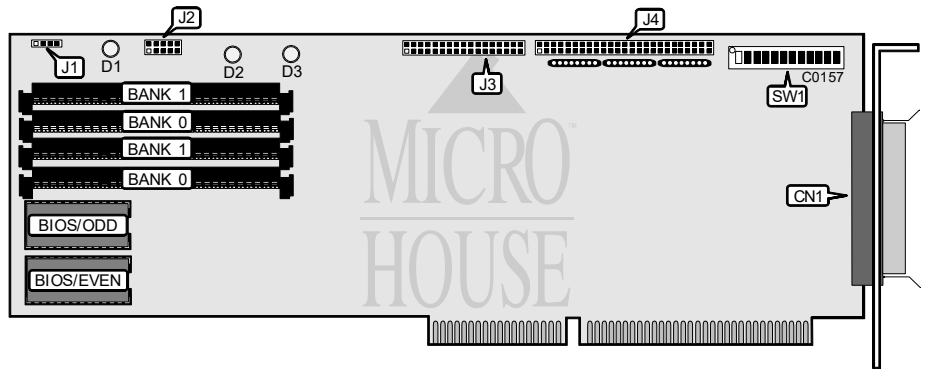


PERCEPTIVE SOLUTIONS, INC.
EASYCACHE PRO SCSI, EASYCACHE SCSI (RELEASE 2.0)

Q4/92

Data bus: 16-bit, ISA
Size: Full-length, full-height card
Hard Drives Supported: Up to seven SCSI devices
Floppy Drives Supported: Two 360KB, 720KB, 1.2MB, or 1.44MB drives



CONNECTIONS	
Functions	Location
DB25 SCSI connector-external (easyCACHE Pro only)	CN1
4-pin connector-Drive Active LED	J1
9-pin serial port	J2
34-pin control cable connector-floppy drive	J3
50-pin SCSI connector-internal	J4

USER CONFIGURABLE SETTINGS		
Function	Location	Setting
í Hard drive port address 1F0-1F7h, 3F0-3F1h, 3F7h	SW1/switch 3	off
Hard drive port address 170-177h, 370-371h, 377h	SW1/switch 3	on
í Floppy drive enabled	SW1/switch 4	off
Floppy drive disabled	SW1/switch 4	on
í Single-speed floppy supported	SW1/switch 5	off
Dual-speed floppy supported	SW1/switch 5	on
í Factory configured - do not alter	SW1/switch 10	off
í hSOS load enabled	SW1/switch 11	off
hSOS load disabled	SW1/switch 11	on
í Termination Power enabled	SW1/switch 12	on
Termination Power disabled	SW1/switch 12	off

Continued on next page. . .

PERCEPTIVE SOLUTIONS, INC.

EASYCACHE PRO SCSI, EASYCACHE SCSI (RELEASE 2.0)

... continued from previous page

BIOS ADDRESS		
Address	SW1/switch 1	SW1/switch 2
C800h	off	off
í D800h	on	off
D000h	off	on
Disabled	on	on

INTERRUPT REQUEST				
IRQ	SW1/switch 6	SW1/switch 7	SW1/switch 8	SW1/switch 9
Disabled	off	off	off	off
IRQ5	on	off	off	off
IRQ12	off	on	off	off
í IRQ14	off	off	on	off
IRQ15	off	off	off	on

CACHE MEMORY CONFIGURATION		
Size	Bank 0	Bank 1
512KB	(2) 256K x 9	NONE
1MB	(2) 256K x 9	(2) 256K x 9
2MB	(2) 1M x 9	NONE
2.5MB	(2) 1M x 9	(2) 256K x 9
4MB	(2) 1M x 9	(2) 1M x 9
8MB*	(2) 4M x 9	NONE
8.5MB*	(2) 4M x 9	(2) 256K x 9
10MB*	(2) 4M x 9	(2) 1M x 9
16MB*	(2) 4M x 9	(2) 4M x 9
Note: * 4MBx9 SIMM's are only supported by the easyCACHE Pro IDE controller		

LED INFORMATION			
LED	Color	Status	Condition
D1	Unidentified	On	Hard drive active
D1	Unidentified	Off	Hard drive inactive
D2	Unidentified	On	SCSI termination power supplied by SCSI bus
D2	Unidentified	Off	No SCSI termination detected
D3	Unidentified	On	Data transfer from cache in progress
D3	Unidentified	Off	Cache inactive