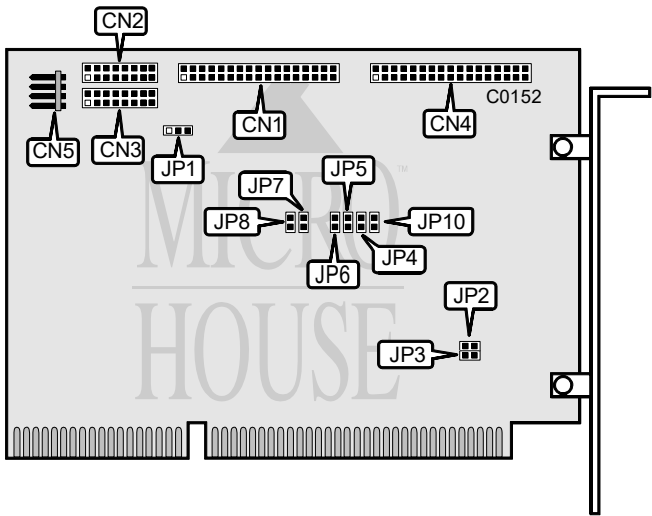


NCL AMERICA
NCL 5475-50, NCL 5476-50

Q2/92

Data bus: 16-bit, ISA
Size: Half-length, full-height card
Hard drives supported: Two ST506/412 MFM drives
Floppy drives supported: NCL 5475-50: Two 360KB, 720KB, 1.2MB, or 1.44MB
NCL 5476-50: None
Maximum heads/cyl.: 16 heads and 2048 cylinders



CONNECTIONS	
34-pin control cable connector-hard drive	CN1
20-pin data cable connector-drive 0	CN2
20-pin data cable connector-drive 1	CN3
34-pin data cable connector-floppy drive (NCL 5355 only)	CN4
4-pin connector-drive active LED	CN5

Continued on next page . . .

NCL AMERICA

NCL 5475-50, NCL 5476-50

... continued from previous page

USER CONFIGURABLE SETTINGS		
Function	Location	Setting
í Hard drive port address is 1F0-1F7h	JP1	pins 2 & 3 closed
Hard drive port address is 170-177h	JP1	pins 1 & 2 closed
í Floppy drive port address is 3F2-3F7h (5475-50 only)	JP2	closed
Floppy drive port address is 372-377h (5475-50 only)	JP2	open
í Factory configured - do not alter	JP3	open
í Factory configured - do not alter	JP4	open
í Factory configured - do not alter	JP5	open
í Unit select turn on the LED	JP6	open
Drive select turn on the LED	JP6	closed
í Factory configured - do not alter	JP7	open
í Factory configured - do not alter	JP8	open
í Hard Drive Interrupt is IRQ14 (Hard-wired)	JP9	pins 2 & 3 closed
Hard Drive Interrupt is IRQ15	JP9	pins 1 & 2 closed
í Factory configured - do not alter	JP10	open