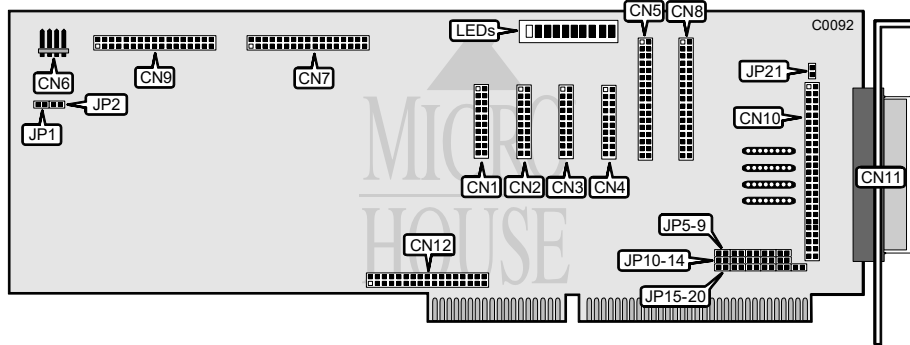


DISTRIBUTED PROCESSING TECHNOLOGY

PM3011E/70, PM3011E/75, PM3011E/759

Q2/92

Data bus: 16-bit ISA
Size: Full-length, full-height card
Hard drives supported: Four ESDI drives and up to seven SCSI devices
 (SCSI support on the models PM3011E/759 only)
Floppy drives supported: Two 360KB, 720KB, 1.2MB, or 1.44MB
Sector Interleave: Automatic



CONNECTIONS	
Function	Location
20-pin data cable connector-drive 3	CN1
20-pin data cable connector-drive 2	CN2
20-pin data cable connector-drive 1	CN3
20-pin data cable connector-drive 0	CN4
34-pin control cable connector-hard drive	CN5
4-pin connector-drive active LED	CN6
Memory module connector	CN7
34-pin data cable connector-floppy drive	CN8
Expansion memory connector	CN9
50-pin SCSI connector-internal	CN10
50-pin SCSI connector-external	CN11
Memory module connector	CN12

Continued on next page . . .

DISTRIBUTED PROCESSING TECHNOLOGY

PM3011E/75, PM3011E/759

... continued from previous page

USER CONFIGURABLE SETTINGS		
Function	Location	Setting
í Not used	JP1	open
í Not used	JP2	open
í Floppy drive port address 3F0-3F7h	JP5	open
Floppy drive port address 370-377h	JP5	closed
í SCSI ID disabled	JP6	open
SCSI ID enabled	JP6	closed
í BIOS disabled	JP7	open
BIOS enabled	JP7	closed
í Hard drive port address 1F0-1F7h	JP17	open
Hard drive port address 170-177h	JP17	closed
í BIOS address C800h	JP18	open
BIOS address D800h	JP18	closed
í SCSI ID address CB00h	JP19	open
SCSI ID address DB00h	JP19	closed
í Floppy drive enabled	JP20	open
Floppy drive disabled	JP20	closed
í Floppy drive head load disabled	JP21	open
Floppy drive head load enabled	JP21	closed

SCSI INTERRUPT REQUEST		
IRQ	Jumper JP11	Jumper JP12
Disabled	open	open
IRQ12	closed	open
IRQ7	open	closed

SCSI DMA CHANNEL				
DRQ	JP13	JP14	JP15	JP16
Disabled	open	open	open	open
DRQ1	closed	open	closed	open
DRQ3	open	closed	open	closed

HARD DRIVE INTERRUPT REQUEST			
IRQ	JP8	JP9	JP10
IRQ14	closed	open	open
IRQ12	open	open	closed
IRQ7	open	closed	open

MISCELLANEOUS TECHNICAL NOTES
For LED information see DPT PM3011A/50-second Edition., PM3011A/60-Second Edition.