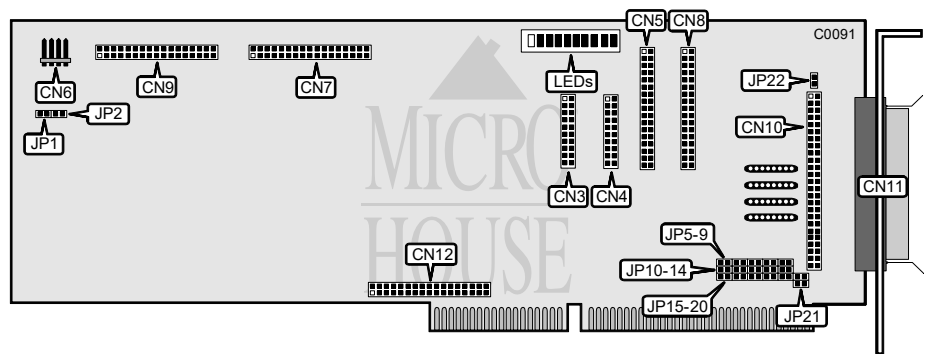


DISTRIBUTED PROCESSING TECHNOLOGY  
PM3011E/55, PM3011E/65, PM3011E/559, PM3011E/659

Q2/92

**Data bus:** 16-bit ISA  
**Size:** Full-length, full-height card  
**Hard drives supported:** PM3011E/55: Two ST506/412 MFM drives  
PM3011E/65: Two ST506/412 RLL drives and up to seven SCSI devices on the PM3011E/x59 models.  
**Floppy drives supported:** Two 360KB, 720KB, 1.2MB, or 1.44MB  
**Sector Interleave:** Automatic



CONNECTIONS	
Function	Location
20-pin data cable connector-drive 1	CN3
20-pin data cable connector-drive 0	CN4
34-pin control cable connector-hard drive	CN5
4-pin connector-drive active LED	CN6
Memory module connector	CN7
34-pin data cable connector-floppy drive	CN8
Expansion memory connector	CN9
50-pin SCSI connector-internal	CN10
50-pin SCSI connector-external	CN11
Memory module connector	CN12

HARD DRIVE INTERRUPT REQUEST			
IRQ	JP9	JP10	JP11
IRQ14	closed	open	open
IRQ12	open	open	closed
IRQ7	open	closed	open

# DISTRIBUTED PROCESSING TECHNOLOGY

## PM3011E/55, PM3011E/65, PM3011E/559, PM3011E/659

USER CONFIGURABLE SETTINGS		
Function	Location	Setting
í Not used	JP1	all
í Supports Xenix and Pick operating systems	JP2	closed
Supports other operating systems	JP2	open
í Floppy drive port address 3F0-3F7h	JP5	open
Floppy drive port address 370-377h	JP5	closed
í SCSI ID disabled	JP6	open
SCSI ID enabled	JP6	closed
í BIOS disabled	JP7	open
BIOS enabled	JP7	closed
í Hard drive port address 1F0-1F7h	JP18	open
Hard drive port address 170-177h	JP18	closed
í BIOS address C800h	JP19	open
BIOS address D800h	JP19	closed
í SCSI ID address CB00h	JP20	open
SCSI ID address DB00h	JP20	closed
í Floppy drive enabled	JP21	open
Floppy drive disabled	JP21	closed
í Floppy drive head load disabled	JP22	open
Floppy drive head load enabled	JP22	closed

SCSI INTERRUPT REQUEST		
IRQ	JP12	JP13
í Disabled	open	open
IRQ12	closed	open
IRQ	open	closed

SCSI DMA CHANNEL				
DMA	JP14	JP15	JP16	JP17
í Disabled	open	open	open	open
DRQ1	closed	open	closed	open
3DRQ	open	closed	open	closed

MISCELLANEOUS TECHNICAL NOTES
For LED information see DPT PM3011A/50-second Edition., PM3011A/60-Second Edition.