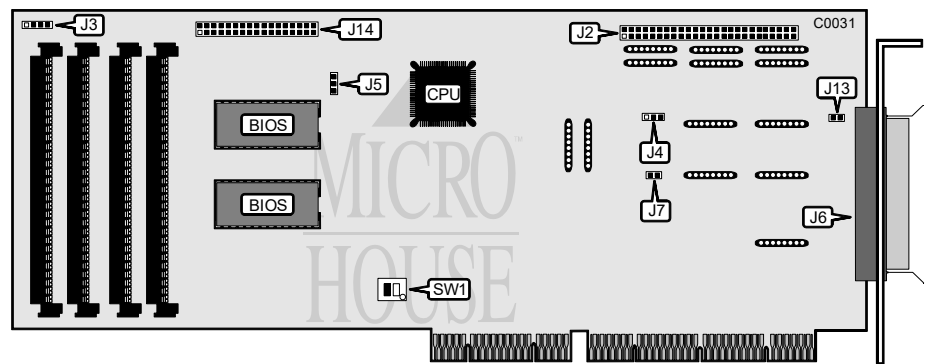


AMERICAN MEGATRENDS, INC.
FAST DISK

Q2/92

Data bus: 32-bit, EISA
Size: Full-length, full-height card
Hard drives supported: Up to seven SCSI devices
Floppy drives supported: Four 360KB, 720KB, 1.2MB, and 1.44MB
Sector Interleave: 1:1



CONNECTIONS	
Function	Location
50-pin SCSI connector-internal	J2
4-pin connector-drive active LED	J3
34-pin data cable connector-floppy drive	J4
50-pin SCSI connector-external	J6

USER CONFIGURABLE SETTINGS		
Function	Location	Setting
i Factory configured - do not alter	J1	open
i Factory configured - do not alter	J4	pins 1 & 2 closed
i Factory configured - do not alter	J5	pins 1 & 2 closed
i Factory configured - do not alter	J7 & J13	open
i Floppy drive enable	SW1/switch 1	on
Floppy drive disable	SW1/switch 1	off
i Used for factory burn-in	SW1/switch 2	off

Continued on next page . . .

AMERICAN MEGATRENDS, INC. FAST DISK

. . . continued from previous page

DRAM CONFIGURATION	
Size	DRAM
1MB	(4) 256K x 9
4MB	(4) 1M x 9
16MB	(4) 4M x 9

MISCELLANEOUS TECHNICAL NOTES	
SW1/switch 1 can be by-passed by the configuration utility.	